



Race Track Road at US 1 (Philips Highway)
Project Development & Environment (PD&E) Study

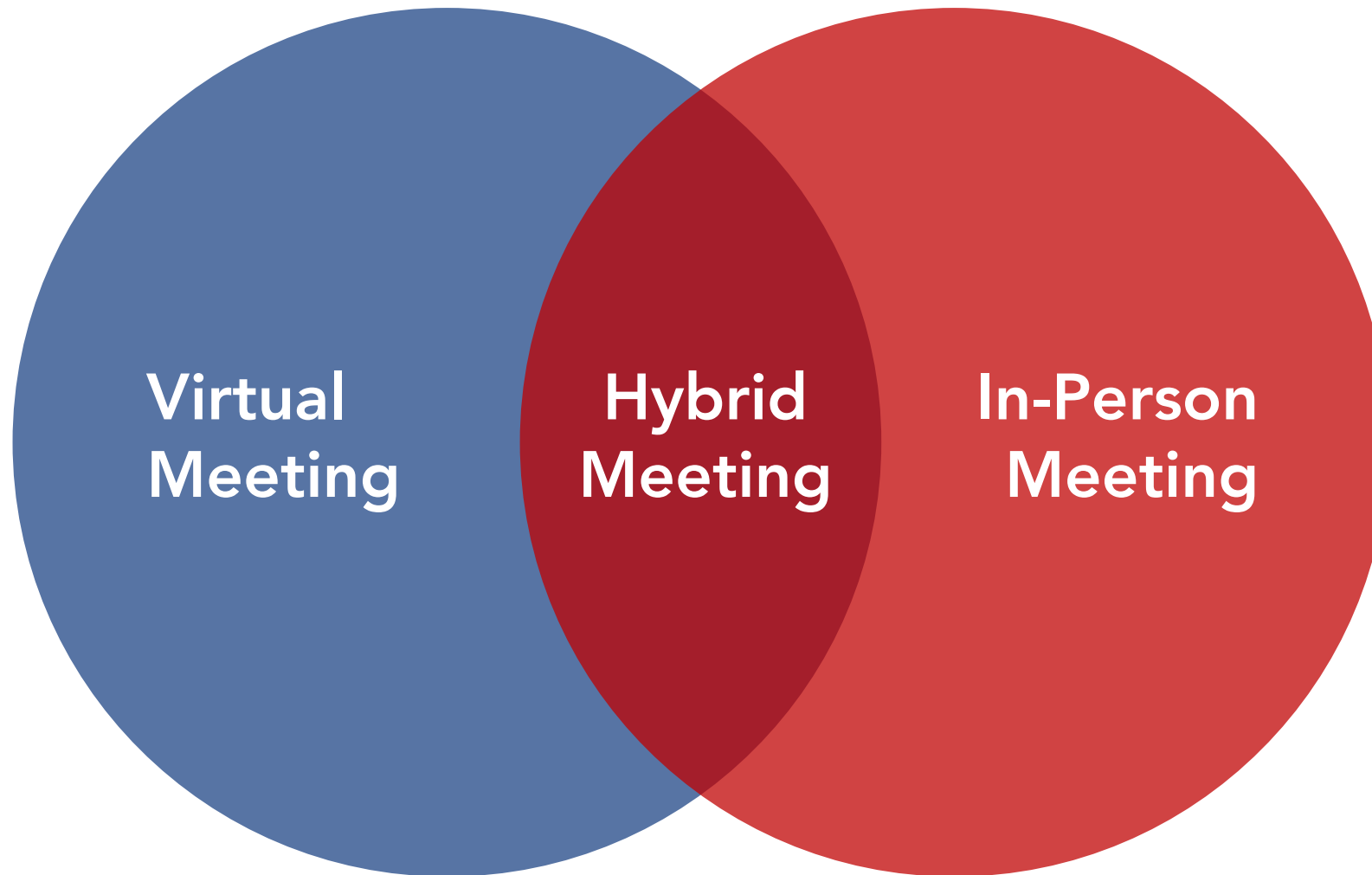
Public Meeting

Financial Project Number: 441220-2

February 8, 2024



This Public Meeting is being conducted in a hybrid format.



Race Track Road at US 1 (Philips Highway) Intersection



Purpose of a Public Meeting

FM #: 441220-2 | Race Track Road at US 1 (Philips Hwy)



Share
Information



Discuss the
Proposed
Improvements



Receive
Public Input

Components of a Public Meeting

FM #: 441220-2 | Race Track Road at US 1 (Philips Hwy)



Open House



Presentation



Public
Comment Period



Public Notifications

FM #: 441220-2 | Race Track Road at US 1 (Philips Hwy)



Florida
Administrative
Register



Property
Owner/Tenant
Letters



Social Media



Newspaper



Emails to
Project Contact List



Project Website





Federal & State Requirements

FM #: 441220-2 | Race Track Road at US 1 (Philips Hwy)

- Americans with Disabilities Act of 1990 (ADA)
- Title VI of the Civil Rights Act of 1964 and Other Nondiscrimination Laws
- 49 CFR Part 24, Uniform Relocation Assistance and Real Property Acquisition for Federal and Federally-Assisted Programs
- 40 CFR Part 1506, Other Requirements of NEPA
- Section 120.525, F.S. *Meetings, hearings, and workshops*
- Section 286.011, F.S. *Government in the Sunshine Law*
- Section 335.199, F.S. *Transportation projects modifying access to adjacent property*
- Section 339.155, F.S. *Transportation Planning*



Civil Rights Act of 1964

FM #: 441220-2 | Race Track Road at US 1 (Philips Hwy)

Public participation is solicited without regard to race, color, national origin, age, sex, religion, disability, or family status.



Title VI: Nondiscrimination Program

Persons may file a formal complaint(s) by writing to:

Dorothy Neal
District 2 Title VI Coordinator

Florida Department of Transportation
District 2
1109 S. Marion Avenue, MS 2006
Lake City, Florida 32025 – 5874
Dorothy.Neal@dot.state.fl.us
(386) 961-7616

Stefan Kulakowski, FCCM, CPM
State Title VI Coordinator

Florida Department of Transportation
Equal Opportunity Office
605 Suwannee Street, MS 65
Tallahassee, Florida 32399-0450
Stefan.Kulakowski@dot.state.fl.us
(850) 414-4742





Memorandum of Understanding Disclosure

FM #: 441220-2 | Race Track Road at US 1 (Philips Hwy)

The environmental review, consultation, and other actions required by applicable Federal environmental laws for this project are being, or have been, carried out by Florida Department of Transportation (FDOT) pursuant to 23 U.S.C. §327 and a Memorandum of Understanding dated May 26, 2022 and executed by Federal Highway Administration and FDOT.

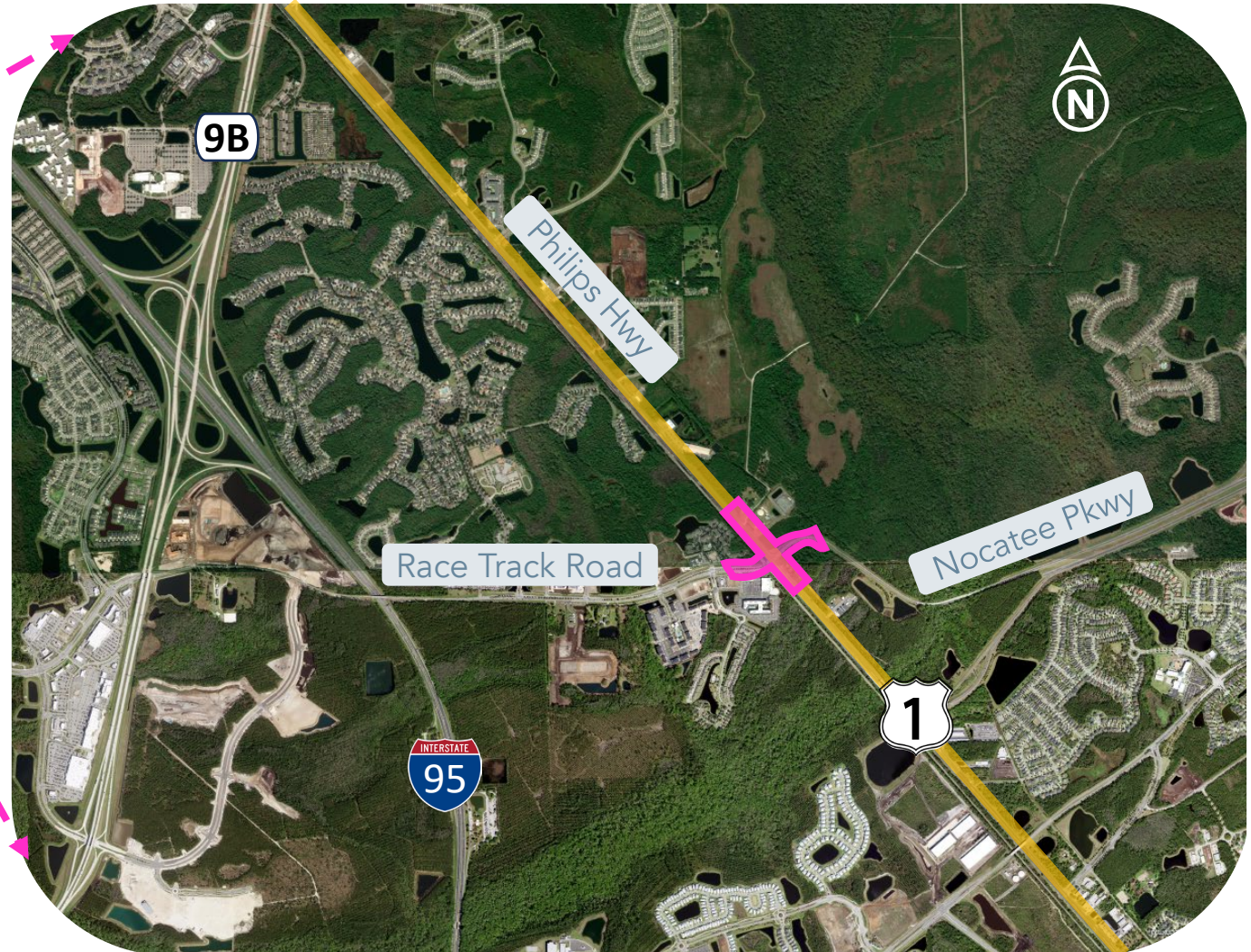
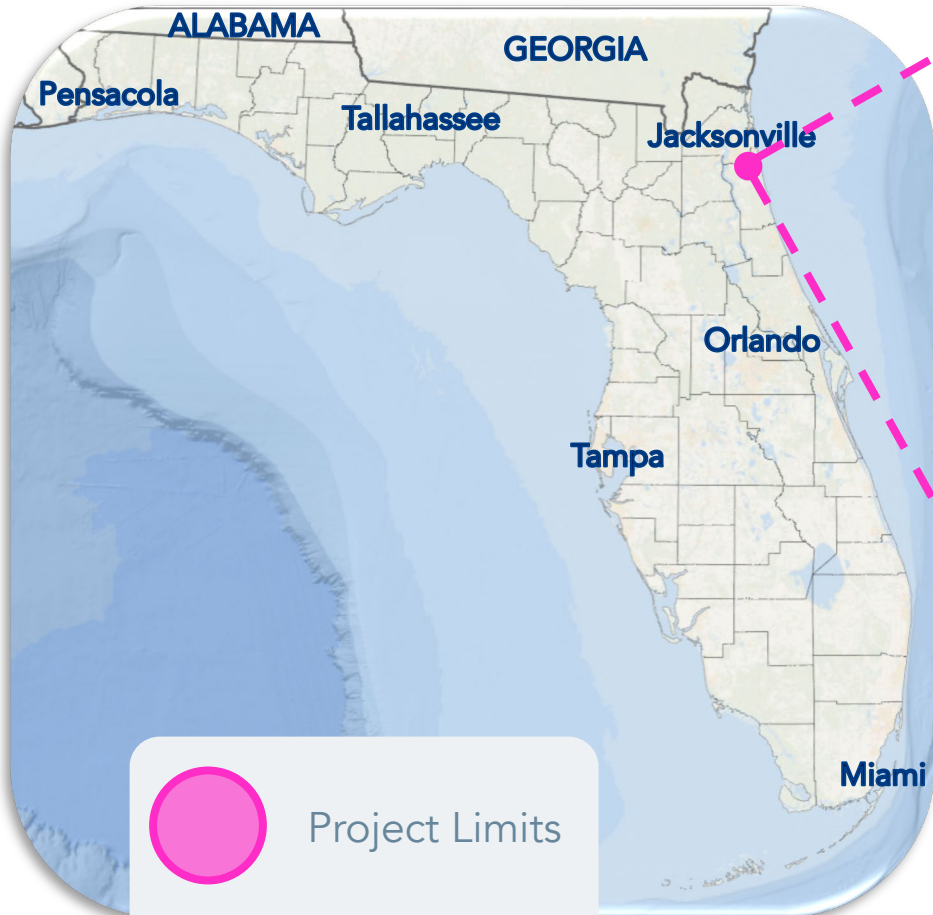


What is a Project Development & Environment (PD&E) Study?



Project Location

FM #: 441220-2 | Race Track Road at US 1 (Philips Hwy)



Purpose and Need



FM #: 441220-2 | Race Track Road at US 1 (Philips Hwy)

- Delays related to railroad crossing
- Relieve congestion and enhance safety





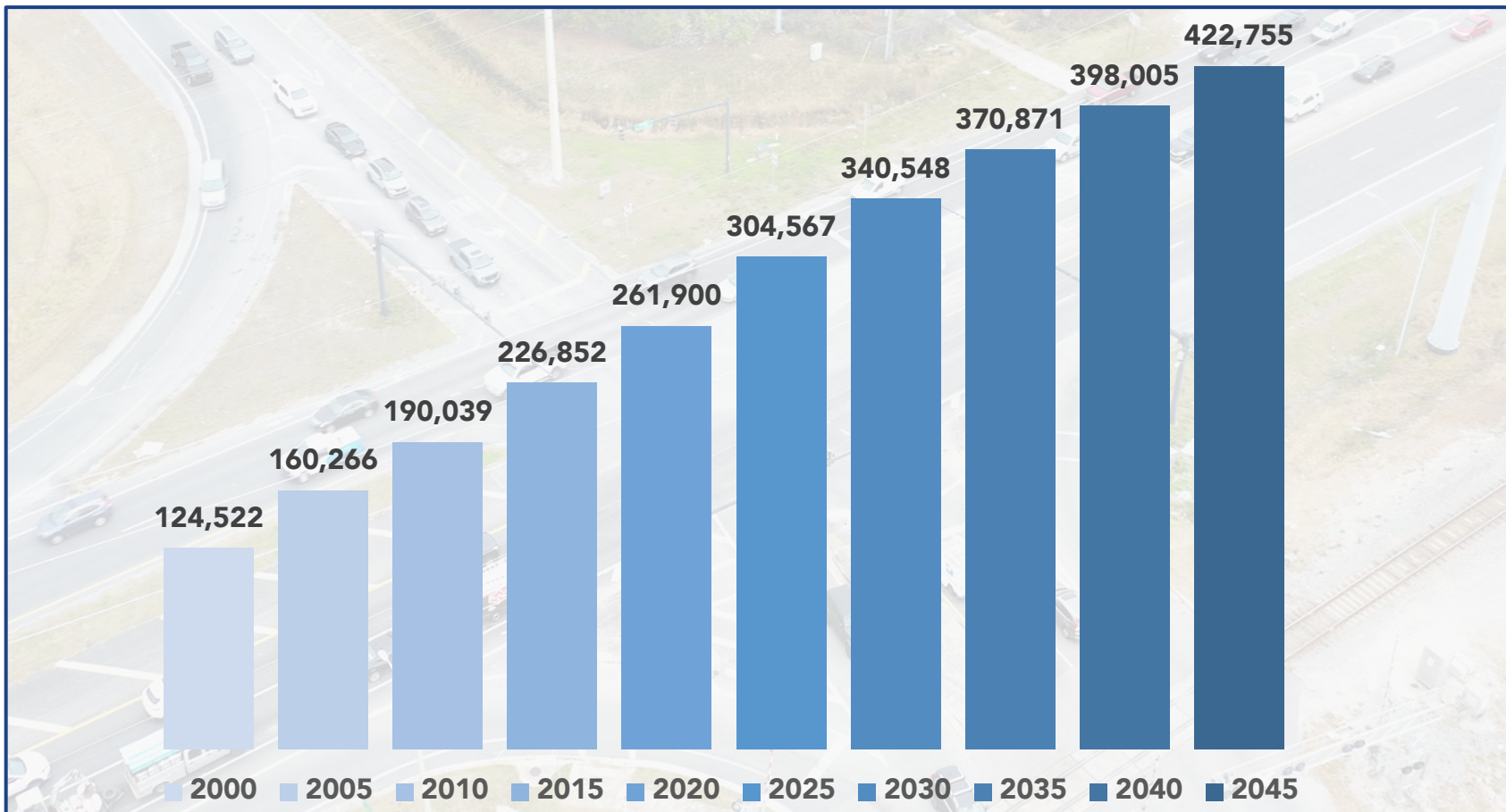
CAPACITY – LEVEL OF SERVICE (LOS)



Population Growth



FM #: 441220-2 | Race Track Road at US 1 (Philips Hwy)



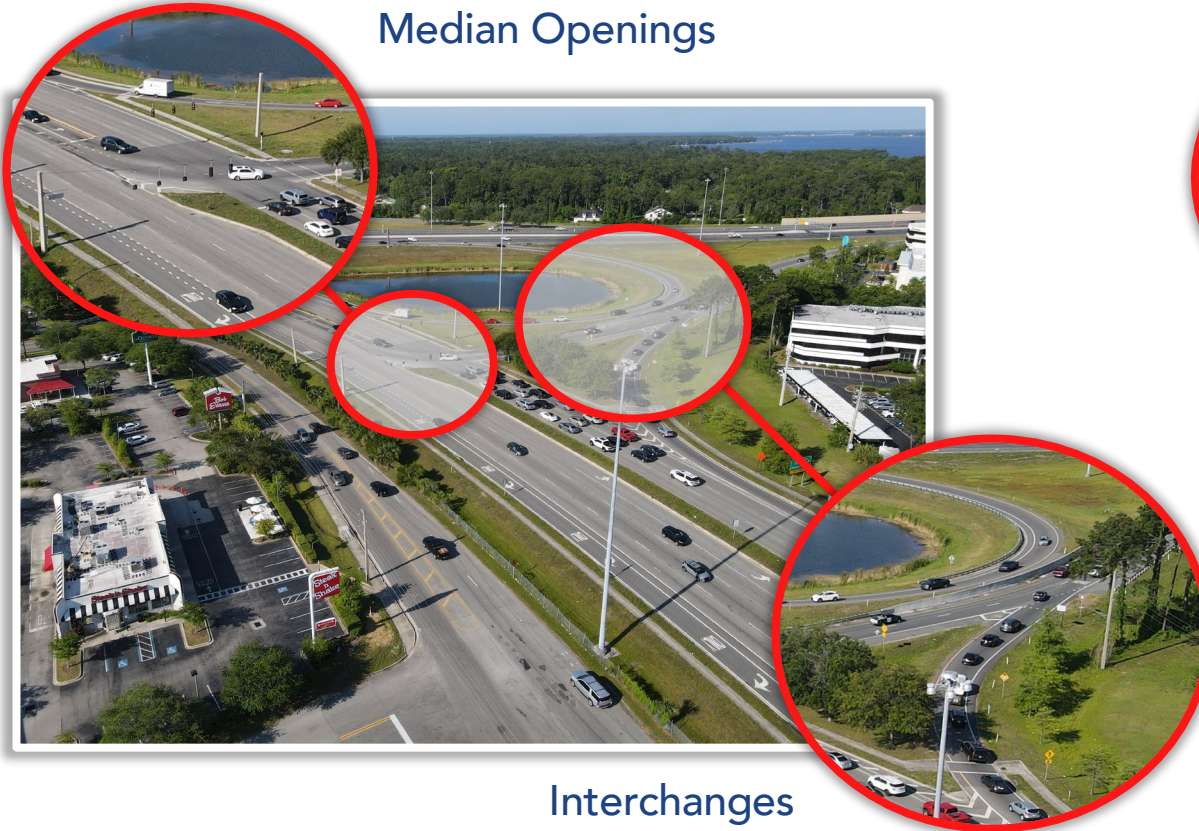
What is Access Management?

FM #: 441220-2 | Race Track Road at US 1 (Philips Hwy)

Access Management is the careful planning of the location, type and design of access to properties, businesses, and homes.



Median Openings



Interchanges

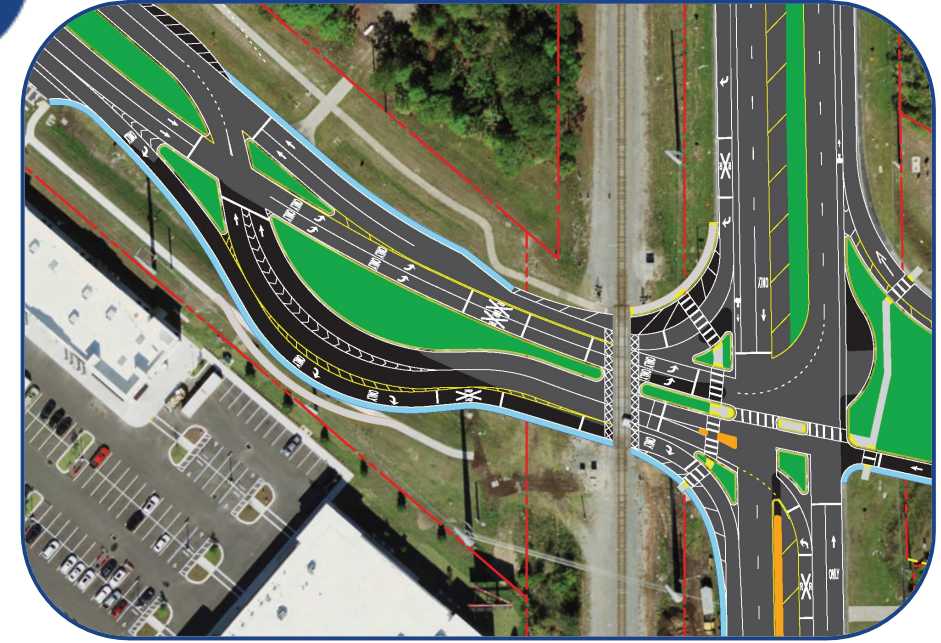
Driveway Openings



Traffic Signals

What is Access Management?

FM #: 441220-2 | Race Track Road at US 1 (Philips Hwy)



Access Management Review Committee

Attention: Carlos Nieto, P.E.

Florida Department of Transportation

2198 Edison Avenue, MS 2815

Jacksonville, Florida 32204

Telephone: (904) 360-5455 or (800) 207-8236

Email: CarlosA.Nieto@dot.state.fl.us

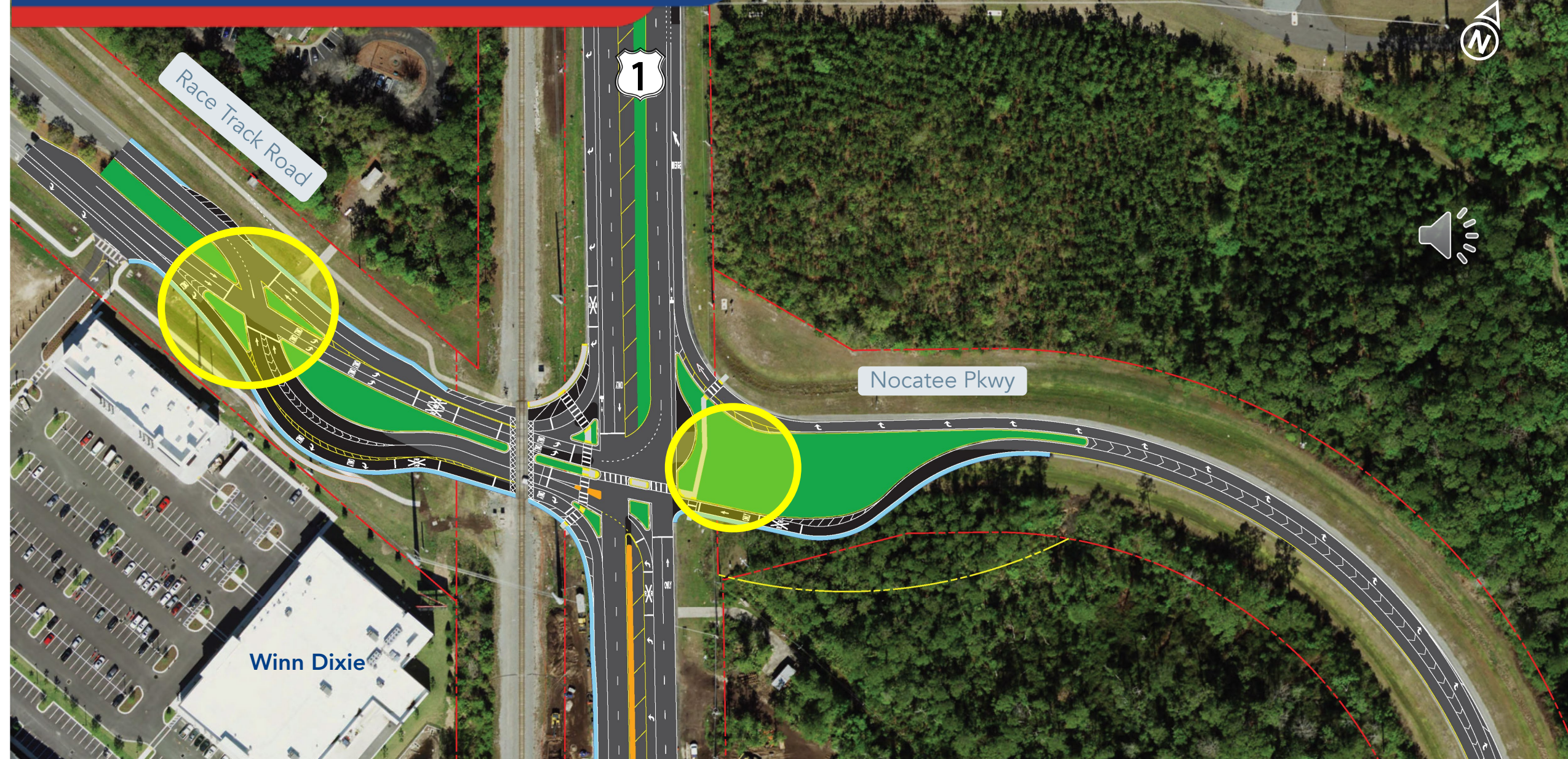
Existing Condition



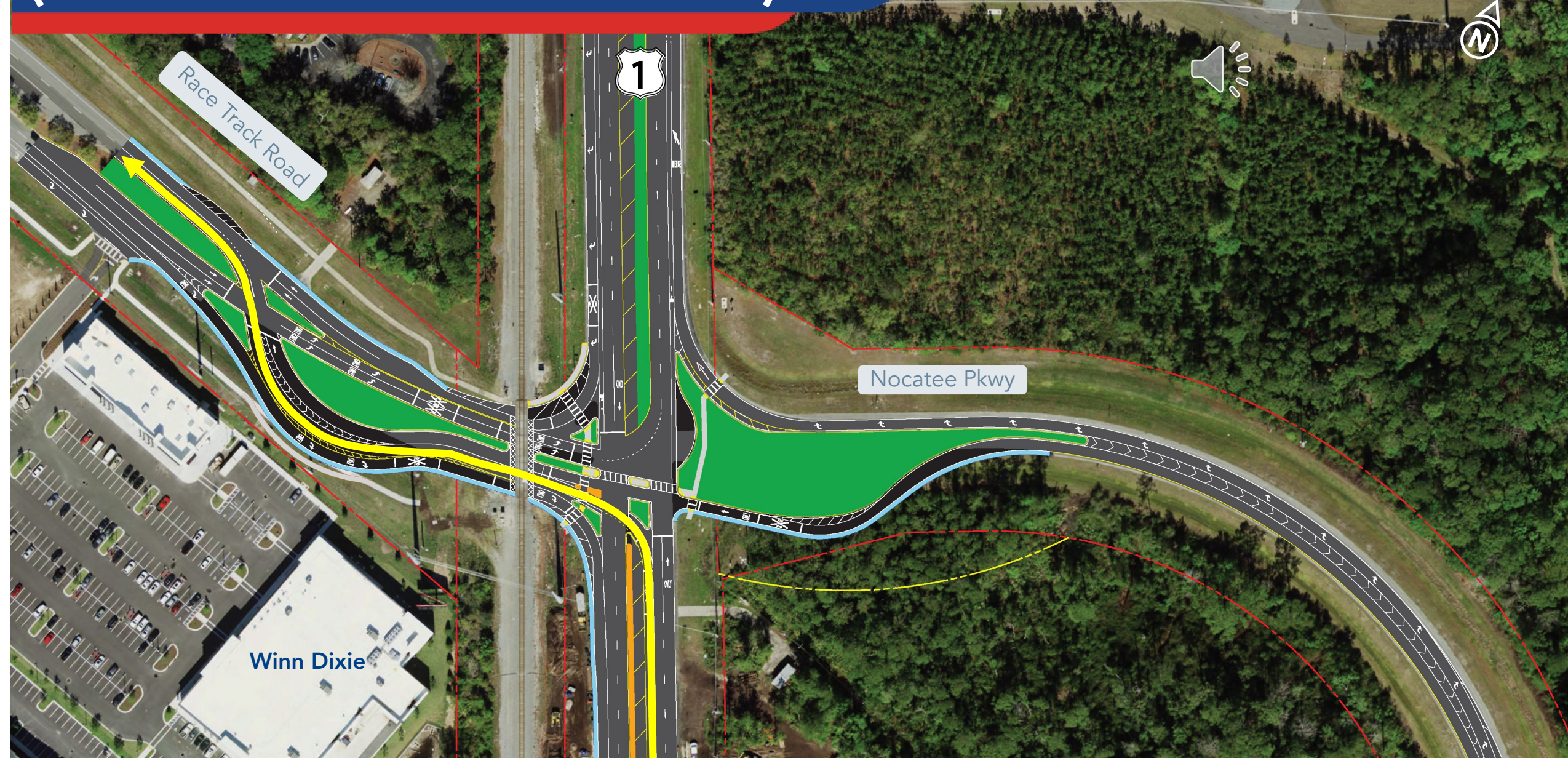
FM #: 441220-2 | Race Track Road at US 1 (Philips Hwy)



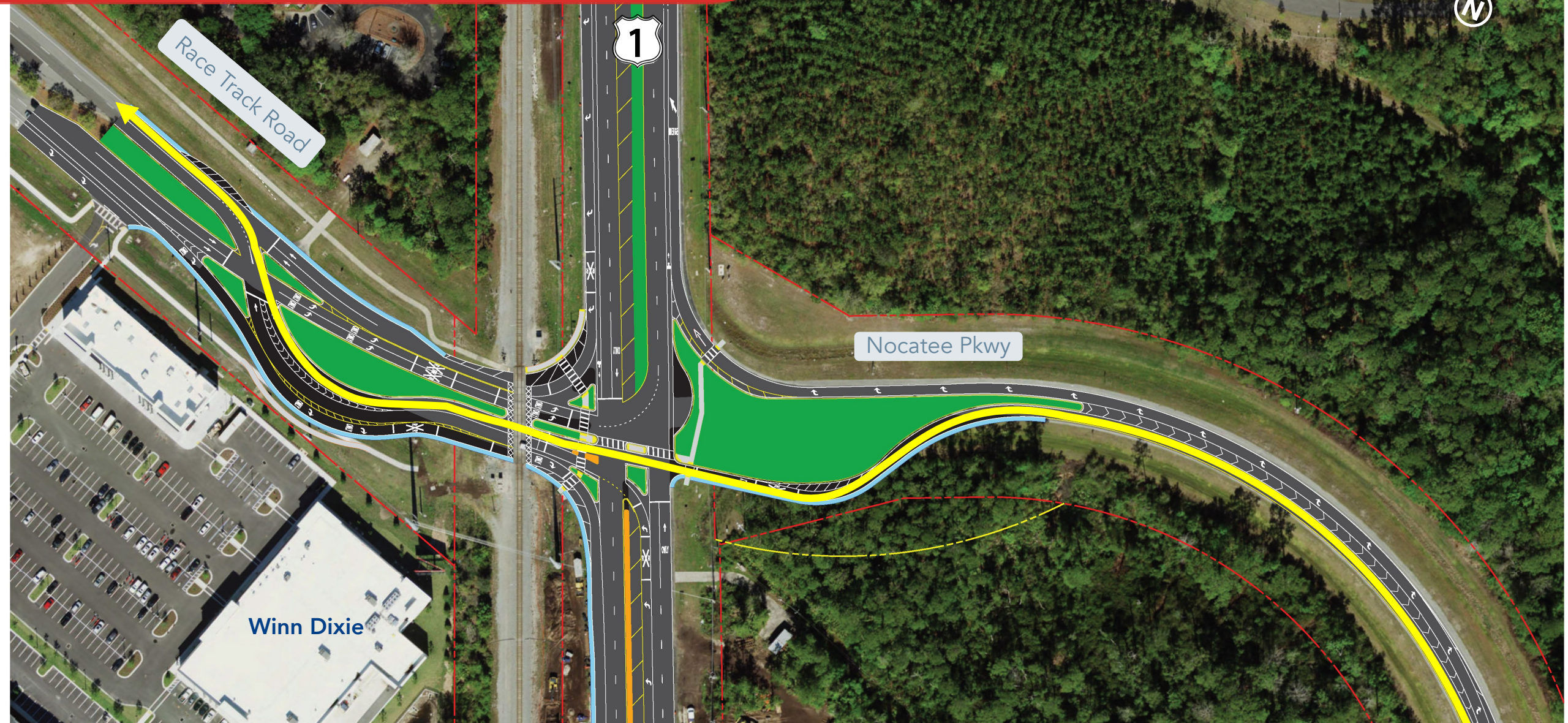
Proposed Improvements



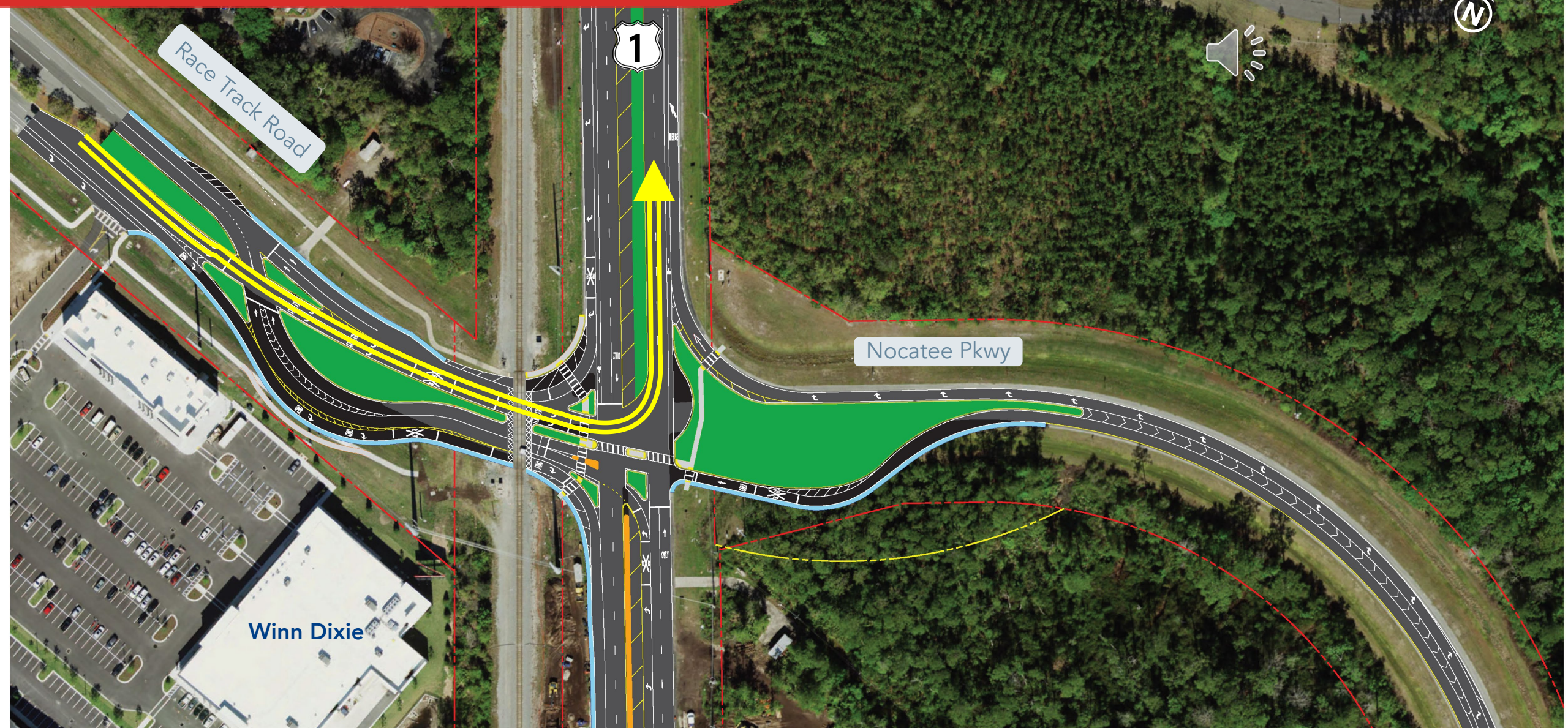
Navigating the Intersection (Left turn on Race Track Road)



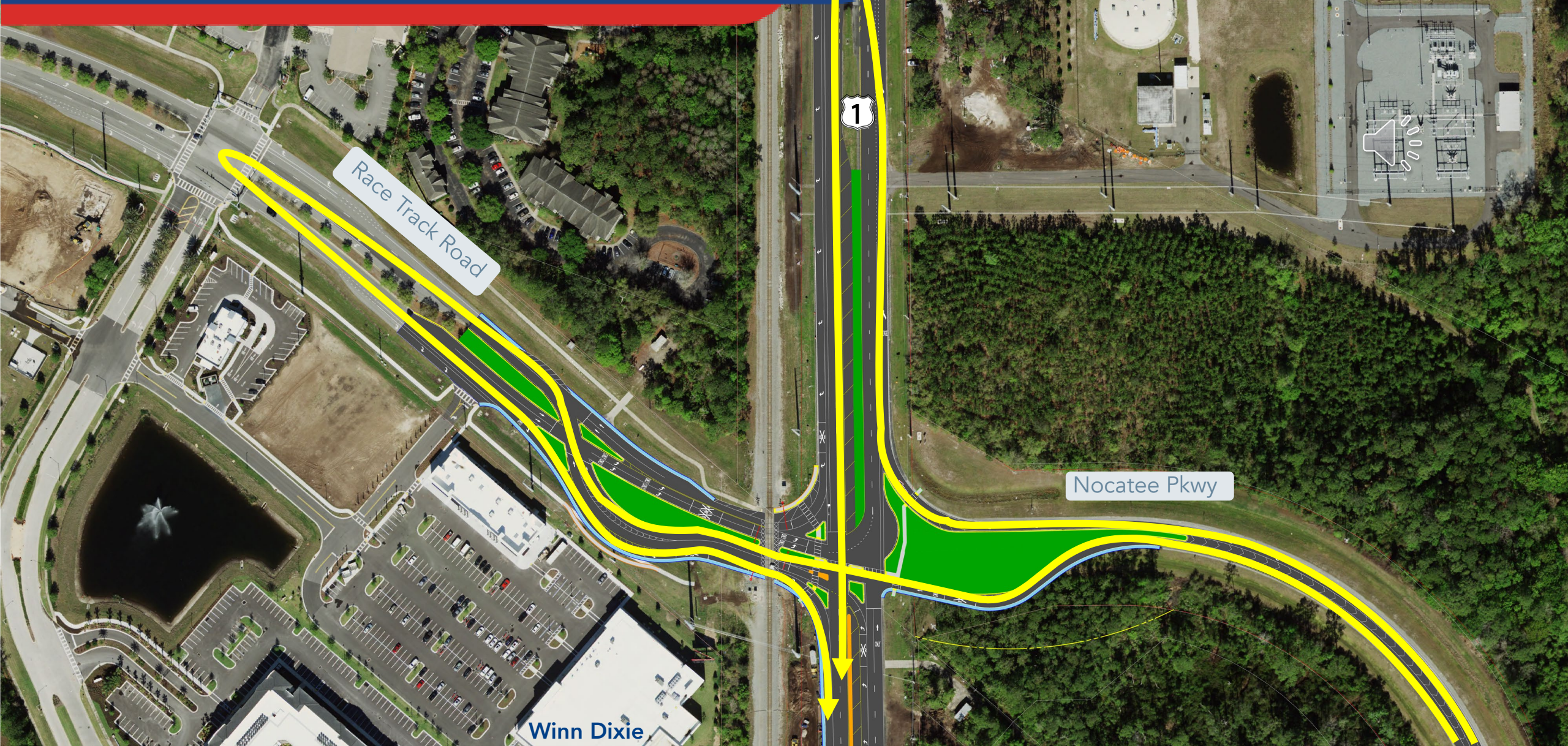
Navigating the Intersection (Through from Nocatee Pkwy)



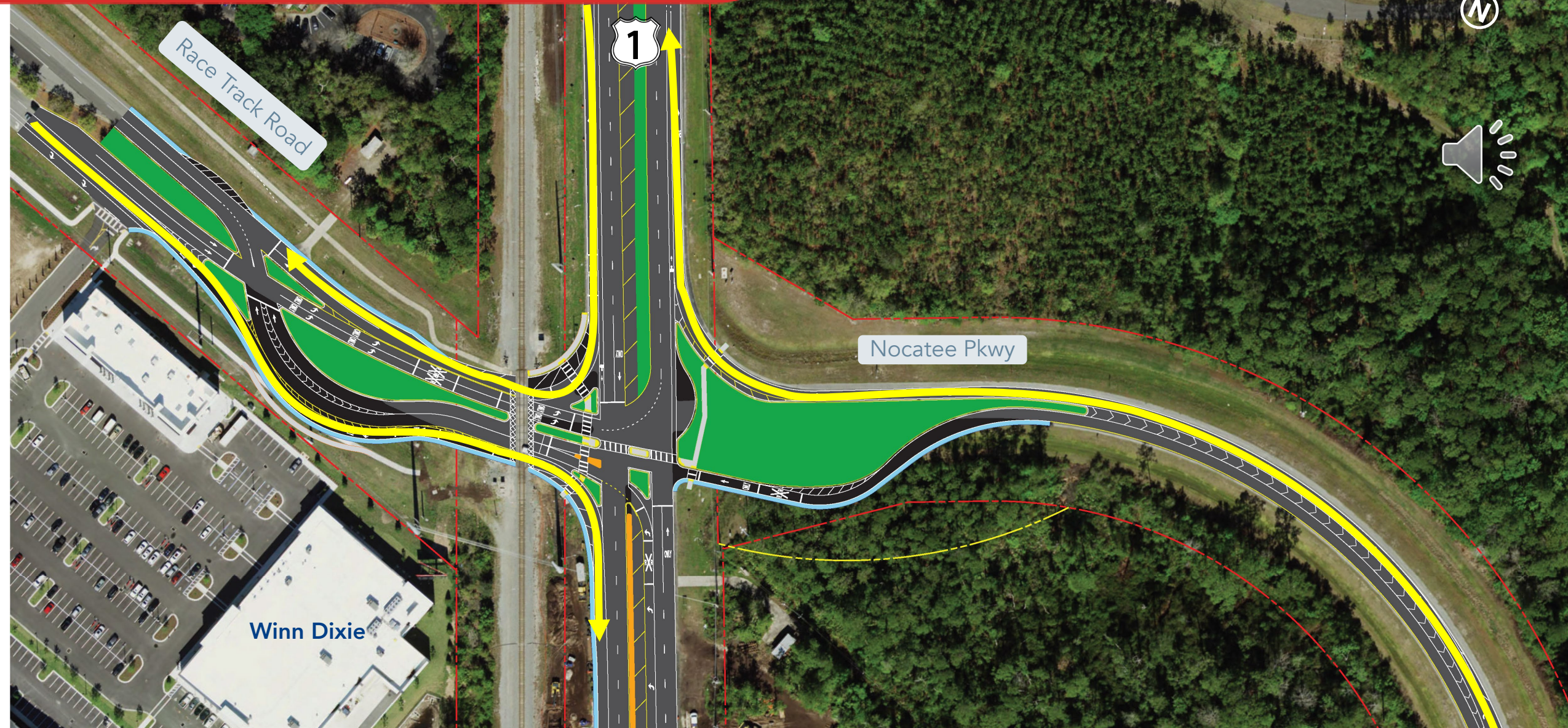
Navigating the Intersection (Left from Race Track Road)



Navigating the Intersection (Left from Nocatee Pkwy)



Navigating the Intersection (Right turn movements)



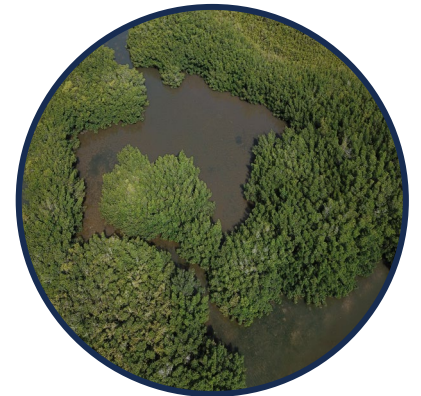
Environmental Impacts



FM #: 441220-2 | Race Track Road at US 1 (Philips Hwy)

No Significant Impacts to:

- Archaeological & Historical Resources
- Contamination Sites
- Wetlands
- Water Quality
- Threatened or Endangered Species



Right-of-Way Acquisition

FM #: 441220-2 | Race Track Road at US 1 (Philips Hwy)

Minimal additional Right-of-Way is anticipated as part of this project.



ACQUISITION PROCESS



The rights explained in this pamphlet are derived from Chapter 73, Florida Statutes. The relevant portions of Chapter 73 concerning the real estate acquisition process of real property are provided for your information at www.FDOT.gov.

Effective: October 13, 2017

The Florida Department of Transportation's (FDOT) mission is to provide a safe transportation system that ensures the mobility of people and goods, enhances economic prosperity and preserves the quality of our environment and communities.

To accomplish our mission, sometimes it is necessary for us to acquire private property. Because you are the owner of property that will be needed for a transportation facility, we have prepared this pamphlet to briefly explain our acquisition process as well as your rights and options.



Permits

FM #: 441220-2 | Race Track Road at US 1 (Philips Hwy)

All applications for required permits will be made at the appropriate time.



Project Schedule & Cost

FM #: 441220-2 | Race Track Road at US 1 (Philips Hwy)



Schedule
& costs are
preliminary
and
subject to
change.

Project Phase	Year
PD&E	On-Going
Design	On-Going
Right-of-Way	2024
Construction	2027

Total Estimated Project Cost = **\$10.5 Million**



For more information
regarding
this project, please visit the
project website at
www.nflroads.com/RaceTrack

We Welcome Your Comments!

FM #: 441220-2 | Race Track Road at US 1 (Philips Hwy)





Contact Information

FM #: 441220-2 | Race Track Road at US 1 (Philips Hwy)



Thomas Redding, PE

Project Manager, FDOT District 2

1109 S. Marion Avenue, MS 2007

Lake City, FL 32025-587

Phone (386) 961-7520

Email Thomas.Redding@dot.state.fl.us

www.nflroads.com/RaceTrack

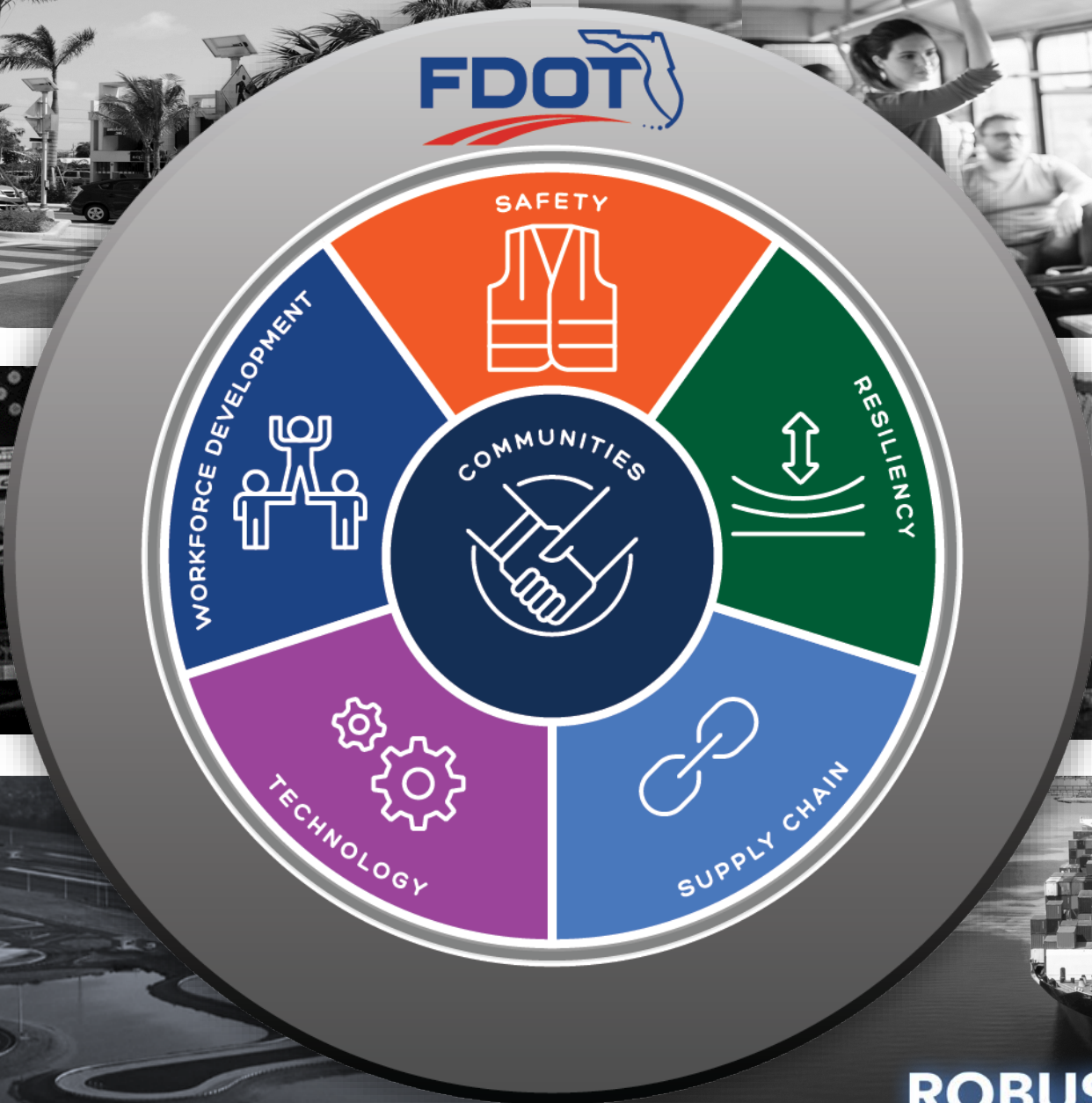
Postmarked Comments

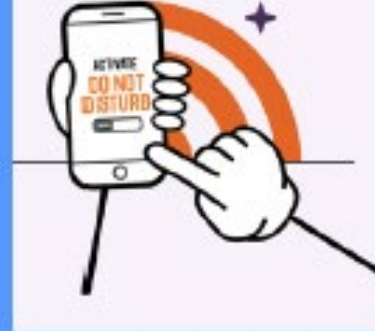
FM #: 441220-2 | Race Track Road at US 1 (Philips Hwy)



Please submit
comments by
February 19, 2024









Thank you for attending