



DISTRICT TWO

STARKE EAST/WEST RAILROAD OVERPASS PD&E STUDY

Starke Railroad Overpass from US 301 to East of CSX RR

Financial Management Number 436558-1

AGENDA

STARKE EAST/WEST RAILROAD OVERPASS PD&E STUDY

- I. Goal of the Project
- II. Background/Need for the Project
- IV. Updates from April 2015
Public Meeting
- V. Alternatives Under
Consideration
- VI. Costs/Schedule
- VII. What's Next



WHAT ARE WE TRYING TO ACCOMPLISH?

STARKE EAST/WEST RAILROAD OVERPASS PD&E STUDY

Provide an east-west railroad overpass in Starke.



HOW MANY PEOPLE HERE TONIGHT HAVE BEEN STOPPED BY THE TRAIN?

STARKE EAST/WEST RAILROAD OVERPASS PD&E STUDY



EXISTING RAILWAY OPERATION

STARKE EAST/WEST RAILROAD OVERPASS PD&E STUDY

Frequency of Trains

- Existing Trains
 - 29 trains per day (FRA Inventory)

Assumptions

- Projected trains (Year 2020)
 - 40 trains per day
- Projected trains (Year 2040)
 - 50 trains per day



BACKGROUND

STARKE EAST/WEST RAILROAD OVERPASS PD&E STUDY

Railroad Overpasses have been recently constructed or are planned at:

- Ocala
- Hawthorne
- Orange Heights
- Baldwin



EXISTING RAILROAD CROSSINGS

STARKE EAST/WEST RAILROAD OVERPASS PD&E STUDY

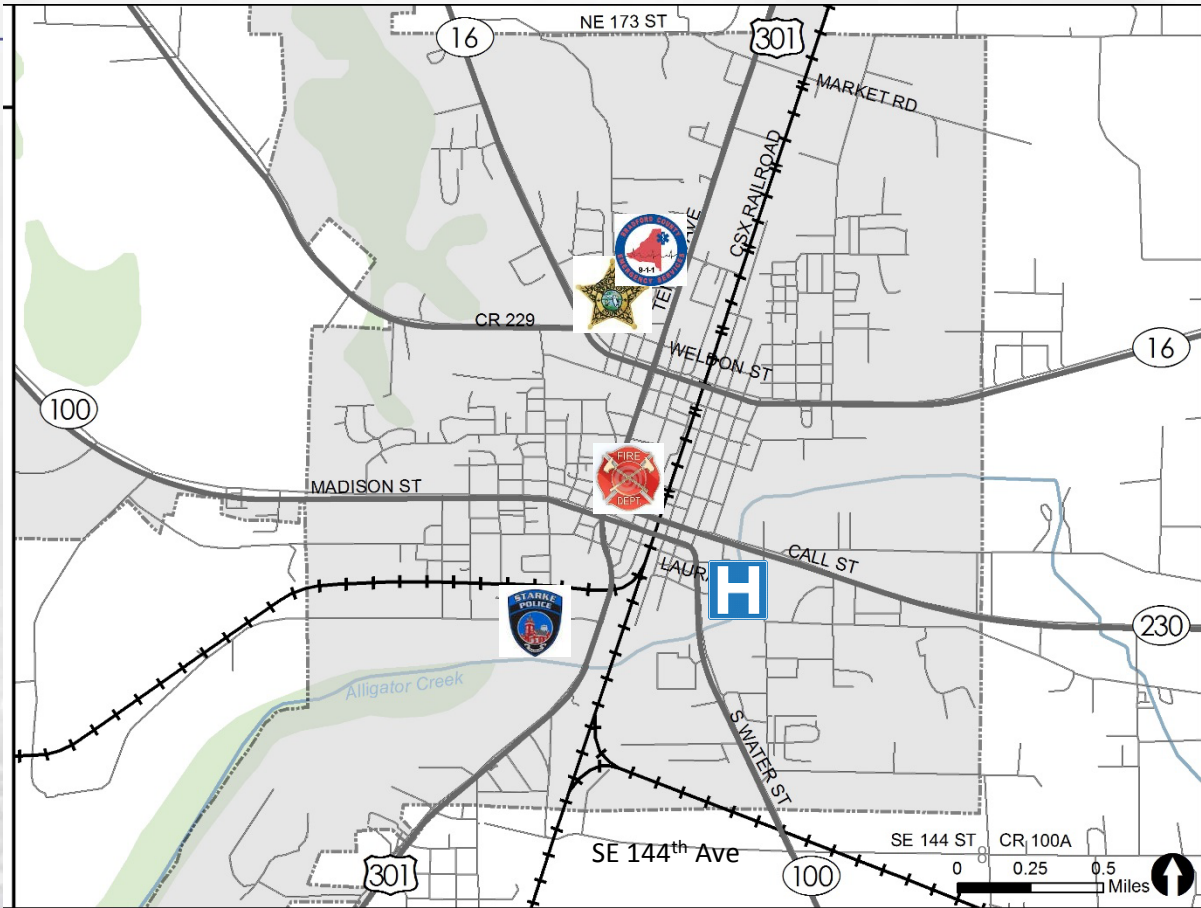
There are nine railroad crossings in Starke between SE 144th Ave and Market Rd.

- Market Rd
- SR 16
- Washington St
- Adkins St
- Jackson St
- Call St
- SR 100
- South St
- SE 144th Ave



Location of EMS, Fire Station, Hospital and Sheriff's Office

- **Hospital**
-Corner of SR 230 (Call St.) and Colley Rd.
- **Fire Department**
-Corner of Jackson St./Thompson St.
- **Starke Police Department**
-Corner of Epperson St./Edwards Rd
- **Sheriff's Department**
-Within Emergency Management Office behind Court House
- **EMS**
-North of Emergency Management Office behind Court House



EXISTING RAILROAD CROSSING QUEUE & DELAY

STARKE EAST/WEST RAILROAD OVERPASS PD&E STUDY

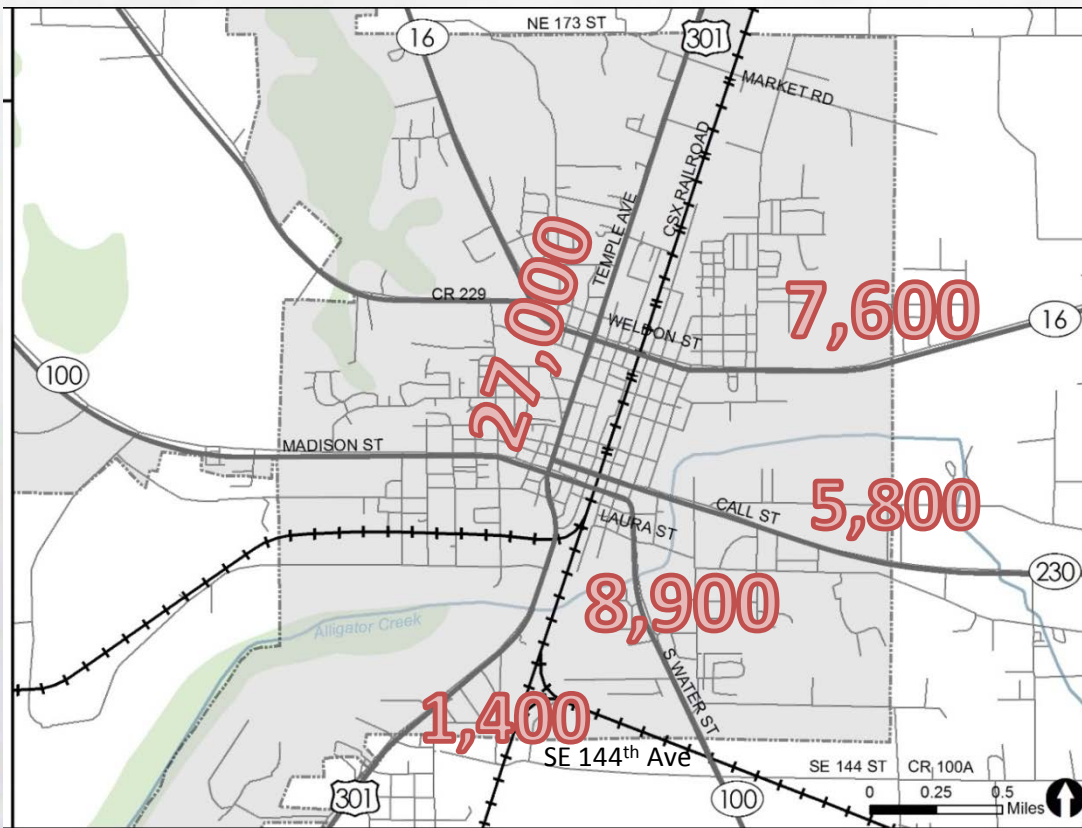
Average Vehicle Queues at Rail Crossings				
Road	EB		WB	
	# of Vehicles	Queue Length	# of Vehicles	Queue Length
SR 100	9	226	9	232
SR 16	6	170	7	196
SE 144th	1	23	1	24

Road	Average Delay Time from Crossing Closure (Minutes: Seconds)
SR 100	2:20
SR 16	2:06
SE 144th	2:20

Data collected from June 16th – 18th, 2015

2015 EXISTING TRAFFIC VOLUMES

STARKE EAST/WEST RAILROAD OVERPASS PD&E STUDY



US 301 – 27,000 AADT

SR 16 – 7,600 AADT

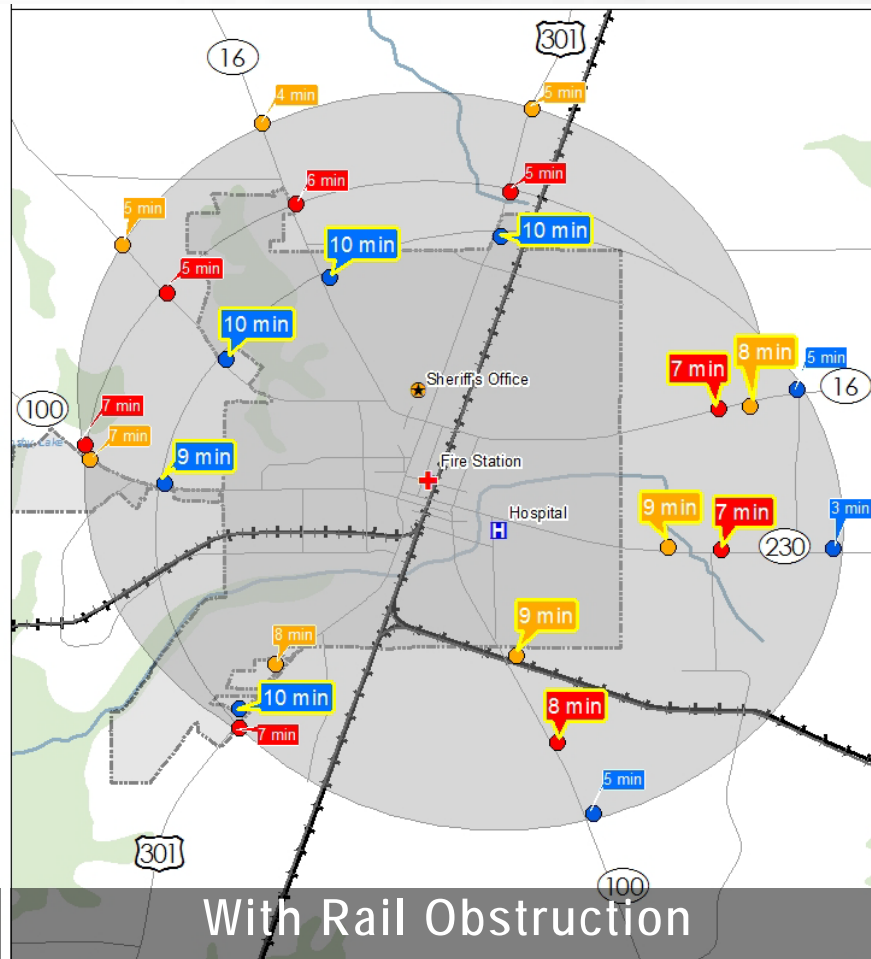
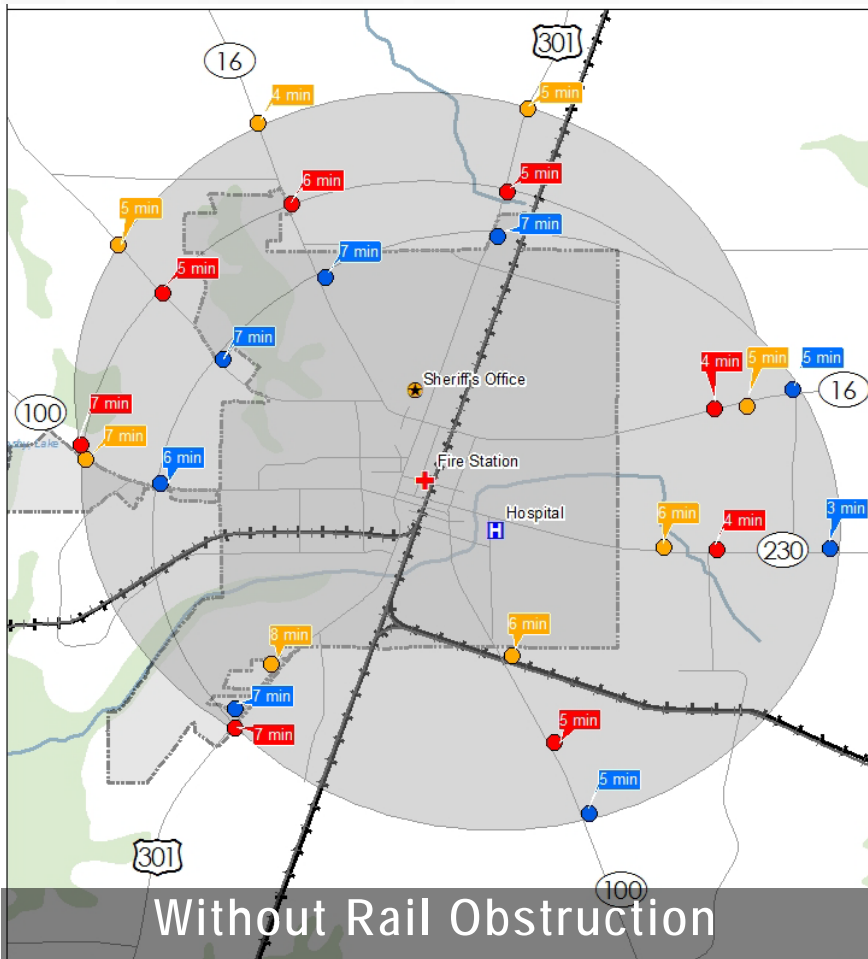
SR 230 – 5,800 AADT

SR 100 – 8,900 AADT

SE 144th Ave – 1,400 AADT

* AADT = Average Annual Daily Traffic

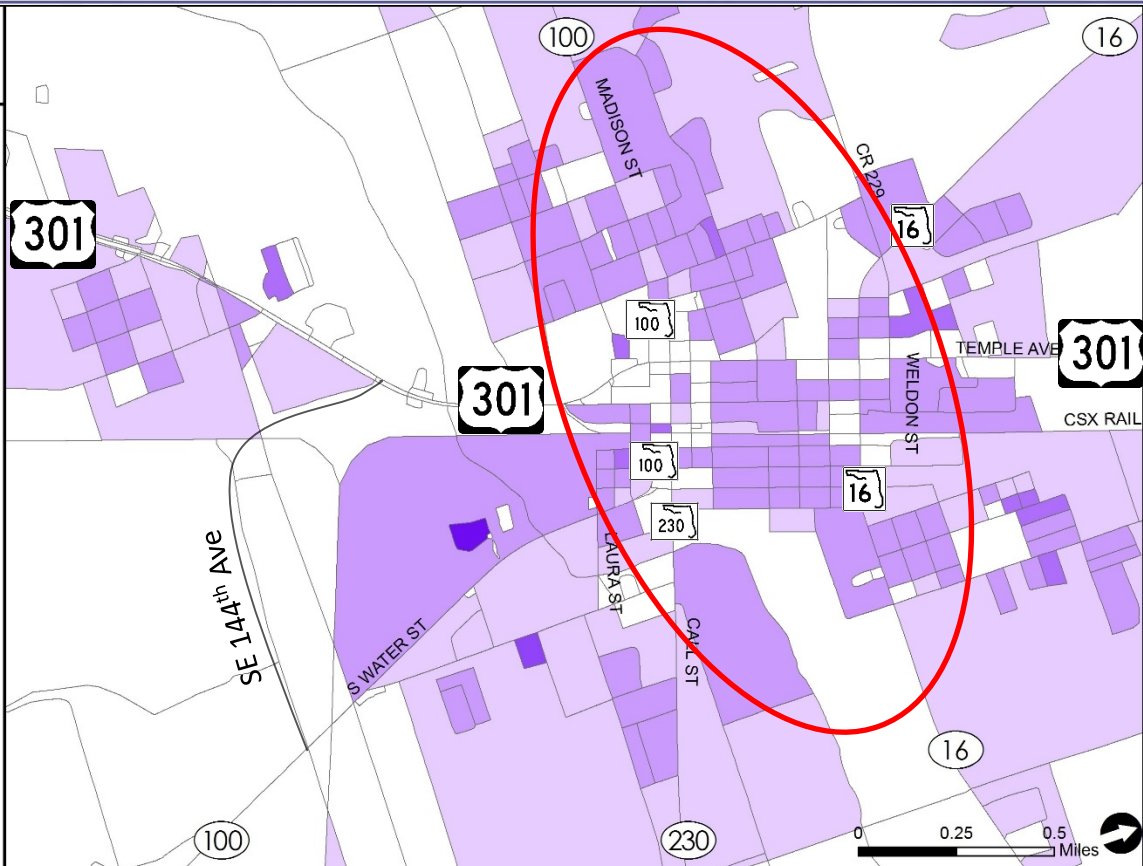
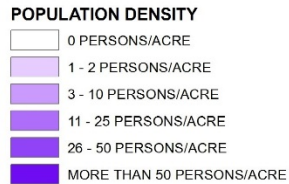
EXISTING TRAVEL TIMES



POPULATION DENSITY

PD&E STUDY

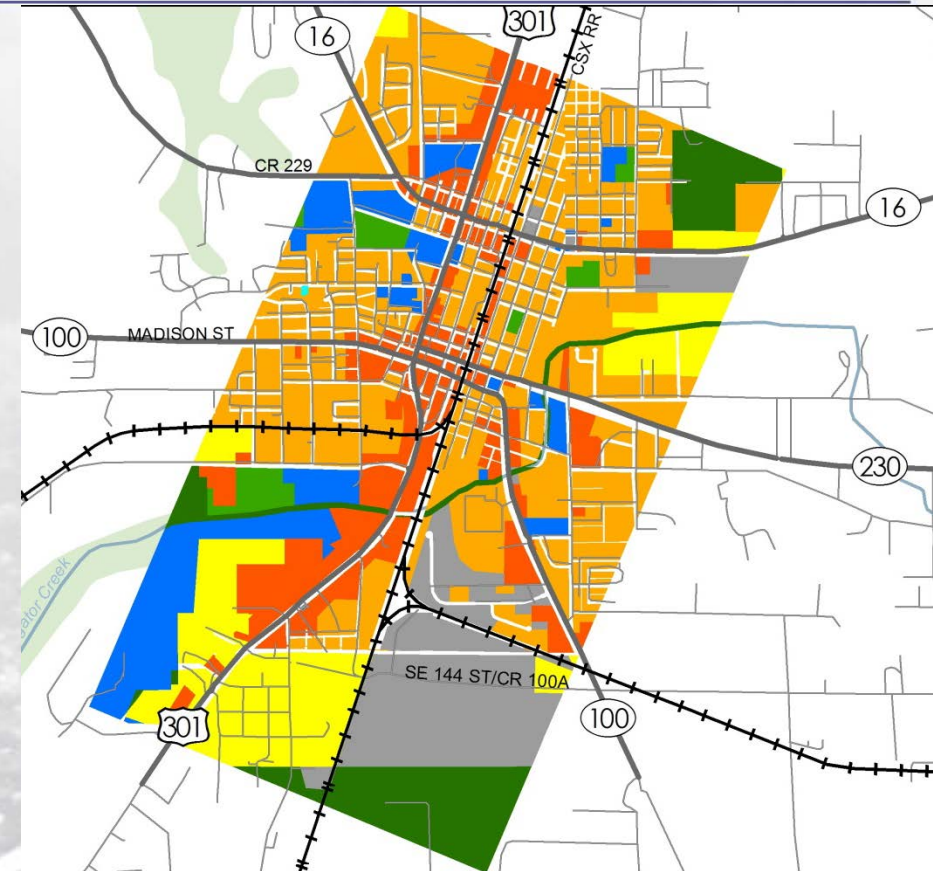
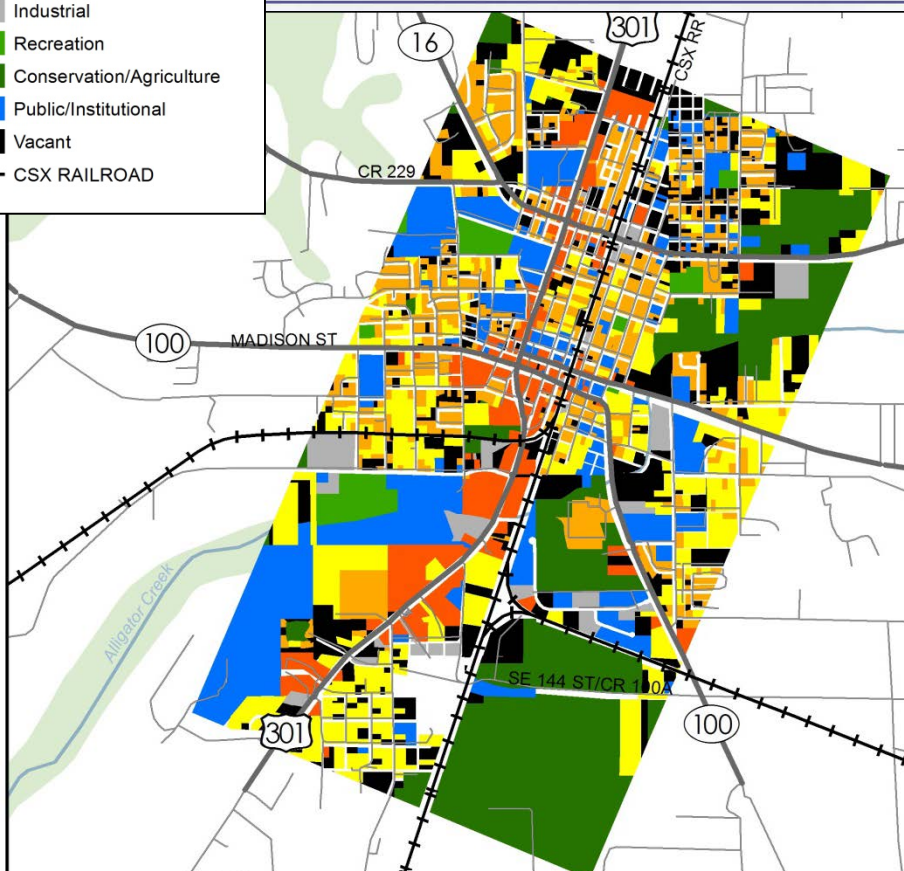
SOCIOECONOMIC DATA: POPULATION DENSITY



Existing Land Use


- Low Density Residential
- Medium Density Residential
- Commercial
- Industrial
- Recreation
- Conservation/Agriculture
- Public/Institutional
- Vacant
- CSX RAILROAD

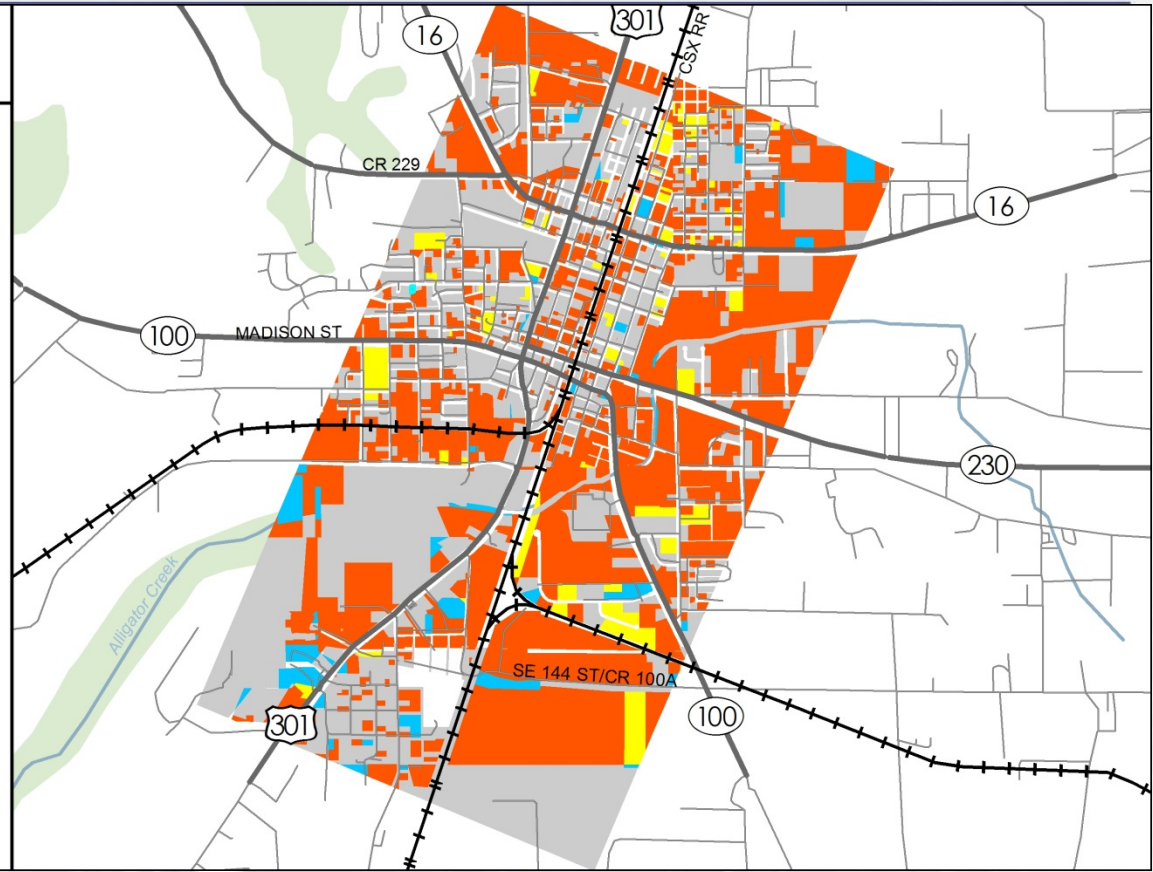
EXISTING AND FUTURE LAND USE



CHANGE IN LAND USE INTENSITY

Change in Land Use Intensity

- Increase
- Decrease
- Same
- Same Intensity; Different Land Use Type
-  CSX RAILROAD



PUBLIC MEETING HELD IN APRIL 2015

STARKE EAST/WEST RAILROAD OVERPASS PD&E STUDY

- Presented five alternatives
 - SE 144th Avenue
 - SR -100 Existing Alignment
 - SR-100 Realignment
 - Weldon Street/SR-16
 - Market Road



PUBLIC MEETING HELD IN APRIL 2015

STARKE EAST/WEST RAILROAD OVERPASS PD&E STUDY

Discarded alternatives

- SR-100 Realignment
 - MOT can be maintained on existing SR-100 with the revised concept
- Weldon Rd./SR-16
 - Very little support from public
 - Too close to schools
 - Diversion of traffic on local streets (St. Clair Street)
- Market Rd
 - Too far north
 - Has the least amount of traffic
 - No support from the public



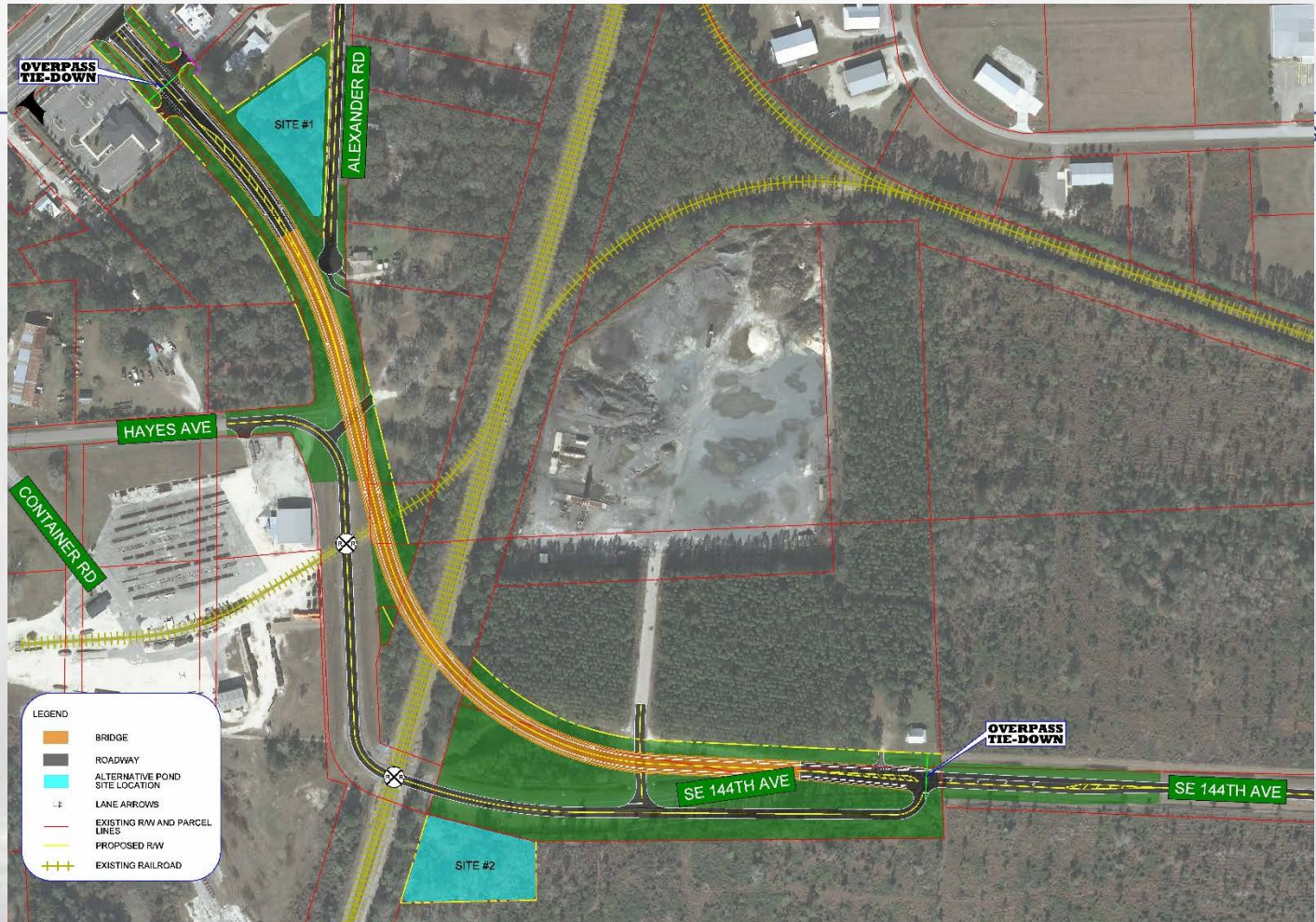
UPDATES SINCE PUBLIC MEETING HELD IN APRIL 2015

STARKE EAST/WEST RAILROAD OVERPASS PD&E STUDY

Narrowed the focus to two alternatives:

- SR-100
 - Updated cost estimate and revised concept
 - Went back to drawing board on Maintenance of Traffic (MOT)
 - Spent a considerable effort working on aesthetics to minimize impacts
 - Focused on connectivity to local street network
 - Met with the City and Chamber on two occasions
- SE 144th Avenue
 - Updated cost estimate and revised concept

144th Avenue Concept



PD&E STUDY

SE 144TH AVE ALTERNATIVE

STARKE EAST/WEST RAILROAD OVERPASS PD&E STUDY

Pros

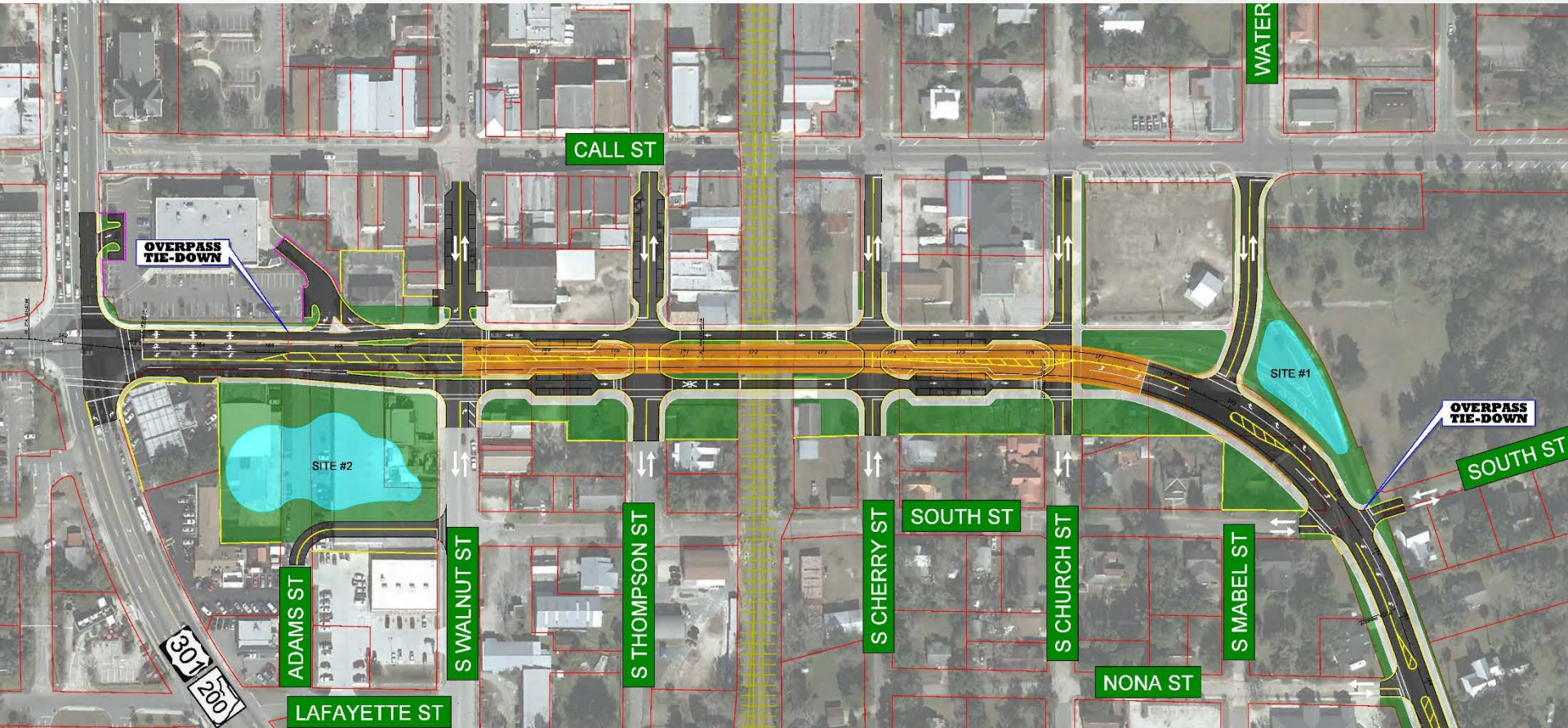
- Undeveloped area will facilitate construction
- Minimizes impacts to businesses and residences
- Provides an overpass where future commercial development may occur south of town

Cons

- Additional travel time from the central part of town for emergency services
- Located on a local road may prohibit FDOT from providing funding for maintenance for bridge elements
- Not centrally located
- Serves less traffic than SR-100
- May divert vehicles from downtown
- Higher overall cost due to bridge length
- Would require modifications to the improvements at the SE 144th and US 301 intersection that were just constructed



SR-100 Concept



SR 100 ALTERNATIVE

STARKE EAST/WEST RAILROAD OVERPASS PD&E STUDY

Pros

- Centrally located
- Higher traffic volumes than all alternatives considered
- Serves regional traffic and local traffic
- Provides the most direct route to the hospital, a key destination for emergency response vehicles
- Closest route to the Fire Station
- Located on a state road allows FDOT to provide funding for inspection and maintenance for bridge elements
- Provides a complete street approach by improving access, recreational areas and safety for non-motorist

Cons

- Impacts to business and residential properties including relocations
- Walnut Street will not connect through the SR-100 intersection
- Disruption of local traffic during construction
- Change in local traffic patterns



PROJECT COSTS (IN MILLIONS)

STARKE EAST/WEST RAILROAD OVERPASS PD&E STUDY

	No-Build	SE 144 th Ave	SR-100
Engineering	\$0	\$8.6	\$4.8
Right-of-Way	\$0	\$2.4	\$10.3
Construction	\$0	\$28.6	\$16.0
TOTAL	\$0	\$39.6	\$31.1

STARKE RAILROAD OVERPASS PROJECT SCHEDULE

STARKE EAST/WEST RAILROAD OVERPASS PD&E STUDY

PD&E Study

Ongoing

Design

Fiscal Year 2016

Right-of-Way

Fiscal Year 2018

Construction

Fiscal Year 2020



WHAT'S NEXT

STARKE EAST/WEST RAILROAD OVERPASS PD&E STUDY

- Decision on recommended alternative in January 2016
- Consider all input from tonight's meeting
- Tentatively scheduled a public meeting in November



QUESTIONS?

STARKE EAST/WEST RAILROAD OVERPASS PD&E STUDY

Stephen Browning, PE, Project Manager
Florida Department of Transportation
1109 South Marion Avenue, MS 2007
Lake City, FL 32025

(386) 961-7455

stephen.browning@dot.state.fl.us

