



DISTRICT TWO

STARKE RAILROAD OVERPASS PD&E STUDY

Starke Railroad Overpass from US 301 to East of CSX RR

Financial Management Number 436558-1



TONIGHTS DISCUSSION

- I. Goal of the Project
- II. Background/Need for the Project
- IV. Updates from August 2015 Public Meeting
- V. Alternatives Under Consideration
- VI. Costs/Schedule
- VII. What's Next



WHAT ARE WE TRYING TO ACCOMPLISH?

Develop a grade separated railroad overpass for Starke.

A grade separated overpass will alleviate congestion caused by vehicles queued while a train blocks the railroad crossing.

Provide emergency responders more reliable means to reach people in need when a train is blocking the crossing



HOW MANY PEOPLE HERE TONIGHT HAVE BEEN STOPPED BY THE TRAIN?



EXISTING RAILWAY OPERATION

Frequency of Trains

- Existing Trains
 - 29 trains per day



Assumptions

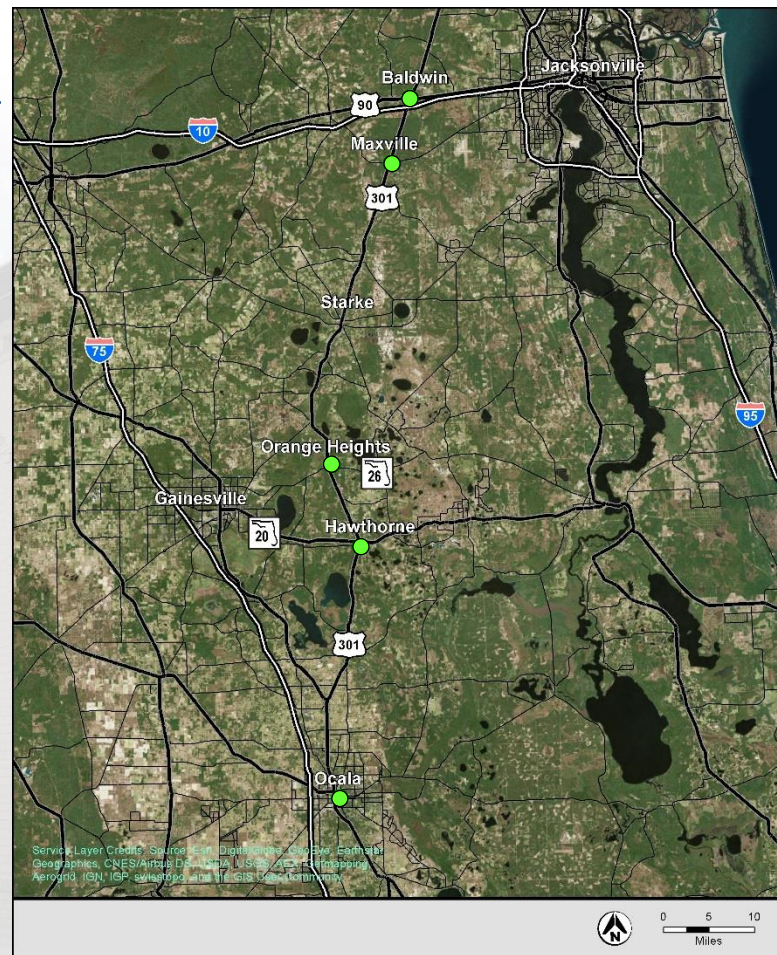
- Projected trains (Year 2020)
 - 40 trains per day
- Projected trains (Year 2040)
 - 50 trains per day



BACKGROUND

Railroad Overpasses have been recently constructed or are planned at:

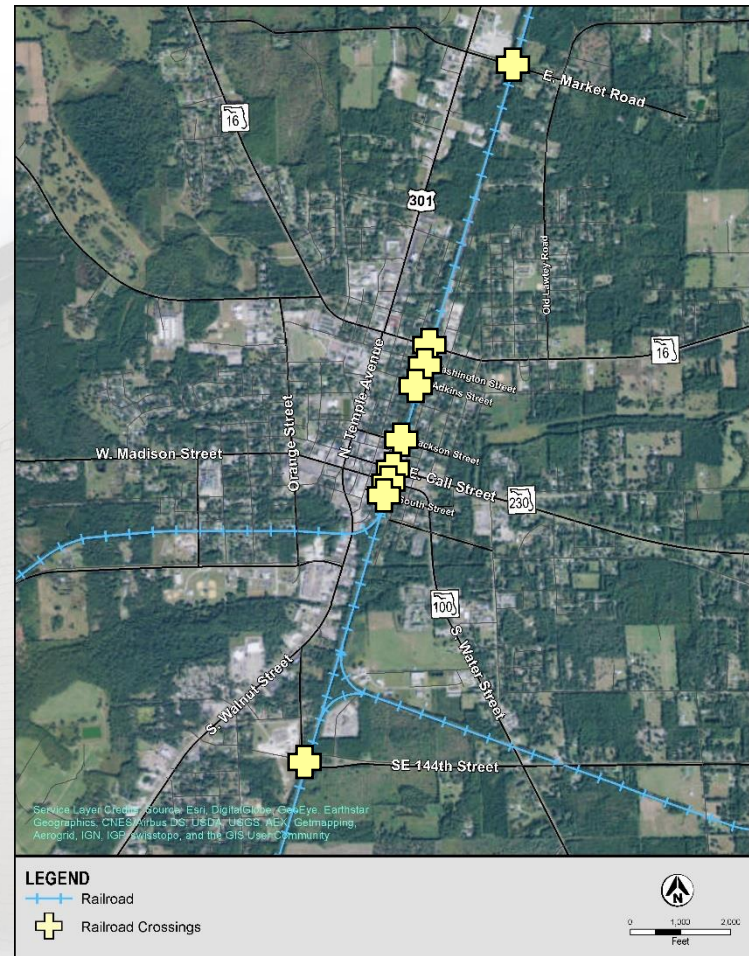
- Baldwin
- Maxville
- Orange Heights
- Hawthorne
- Ocala



EXISTING RAILROAD CROSSINGS

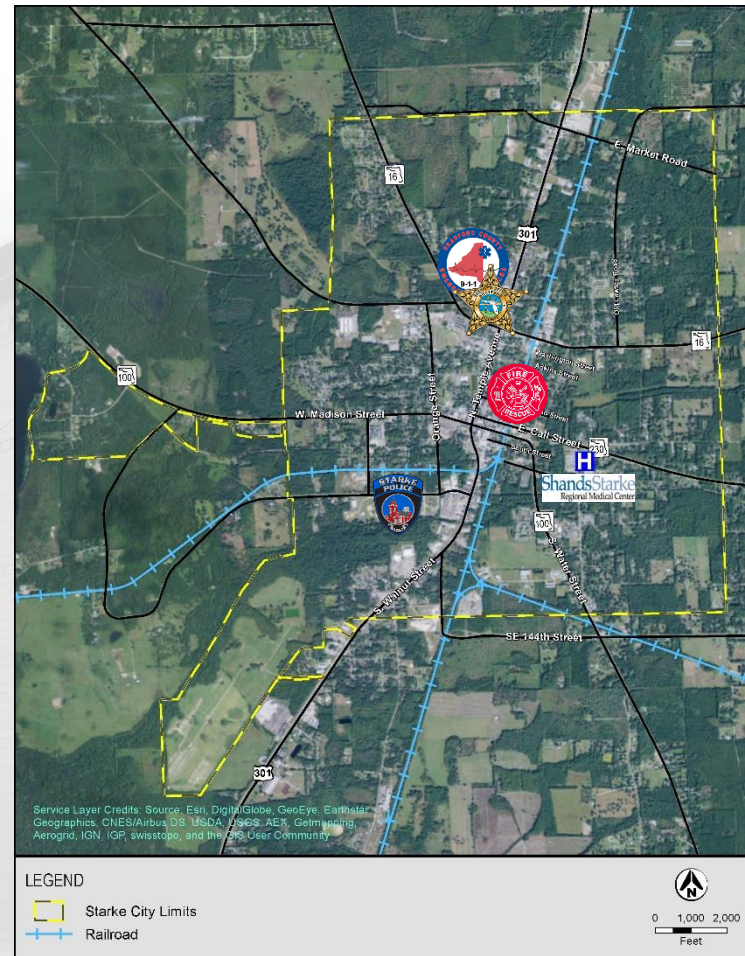
There are nine railroad crossings in Starke between SE 144th and Market Road:

- Market Road
- SR 16
- Washington Street
- Adkins Street
- Jackson Street
- Call Street
- SR 100
- South Street
- SE 144th

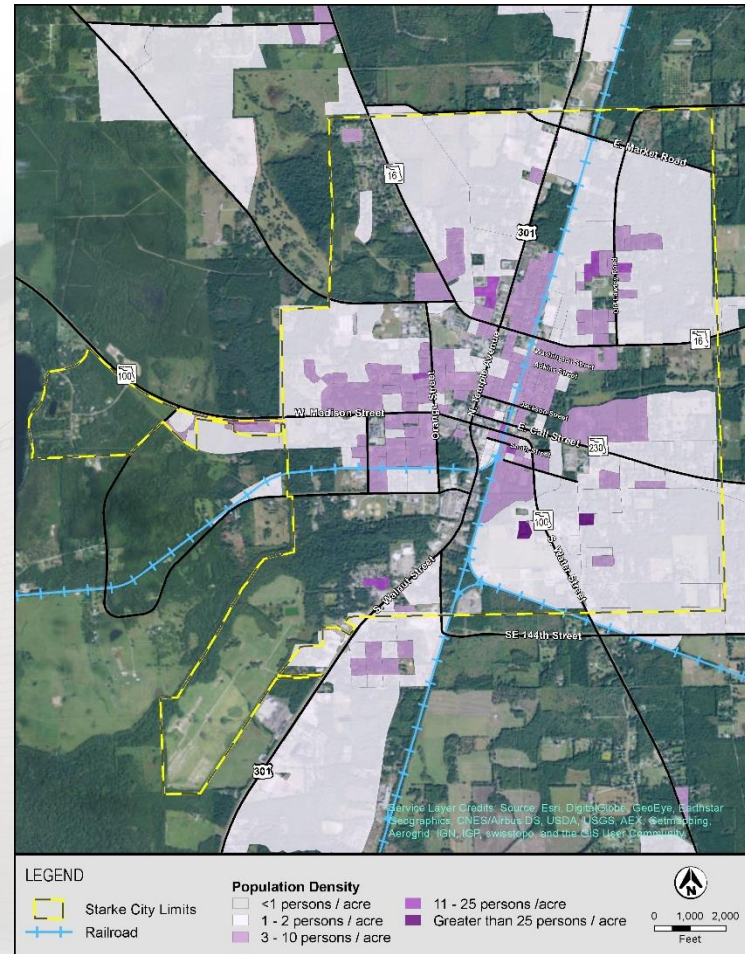
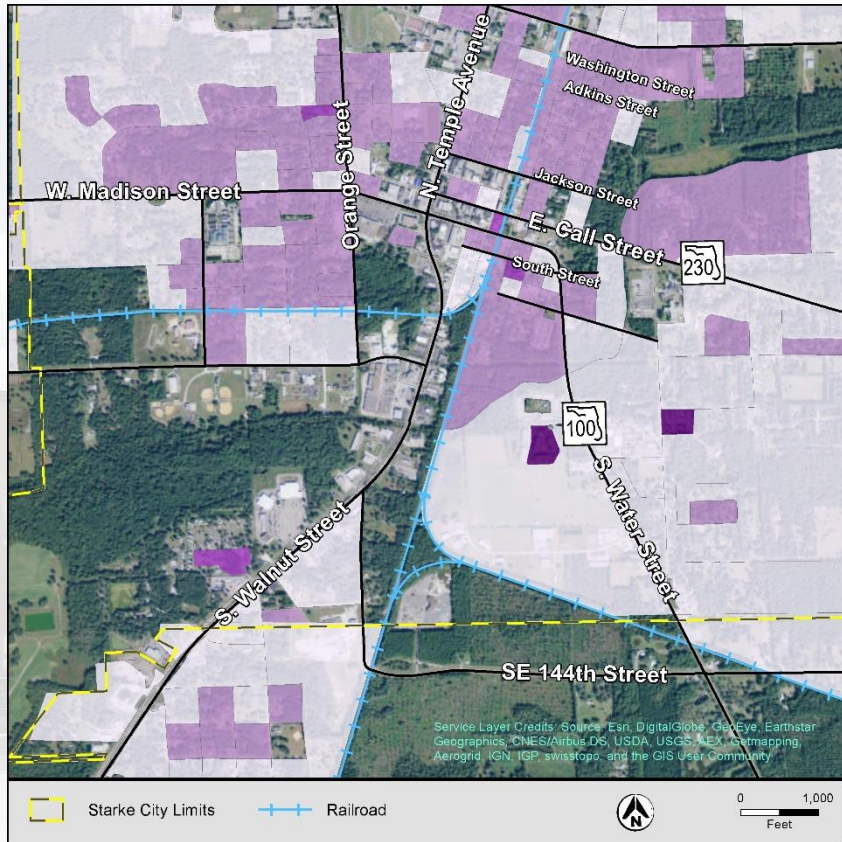


LOCATION OF EMS, FIRE STATION, HOSPITAL, POLICE DEPARTMENT AND SHERIFF'S OFFICE

- EMS
 - North of Emergency Management Office behind Court House
- Fire Station
 - Corner of Jackson St. / Thompson Street
- Hospital
 - Corner of SR 230 (Call Street) and Colley Road
- Starke Police Department
 - Corner of Epperson St./Edwards Road
- Sheriff's Department
 - Within Emergency Management Office behind Court House



POPULATION DENSITY

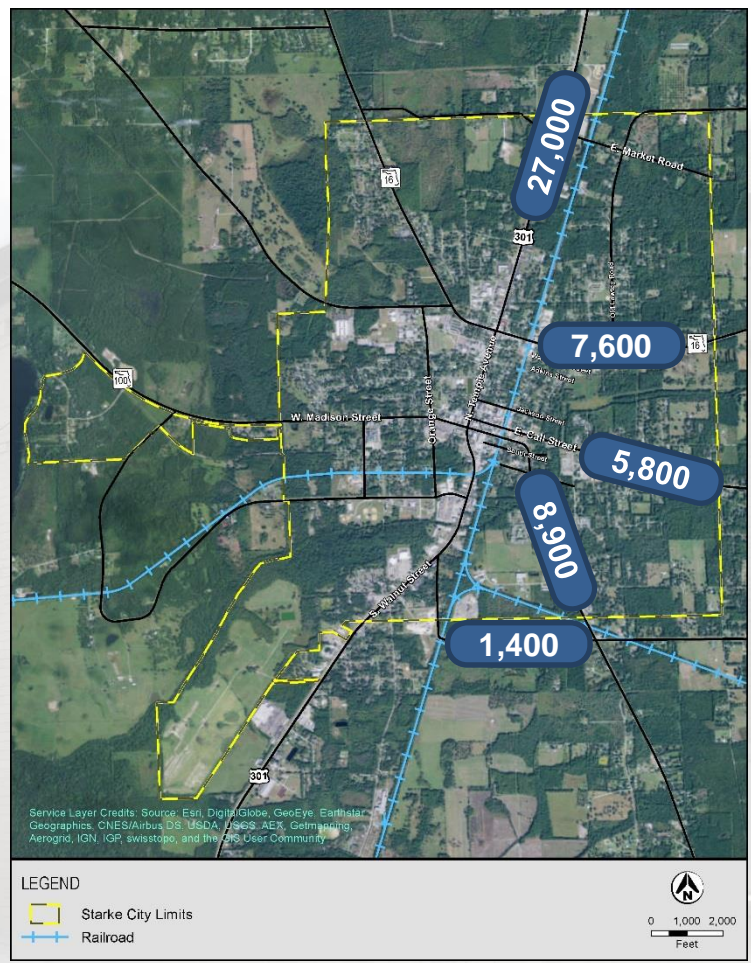


STARKE RAILROAD OVERPASS STUDY

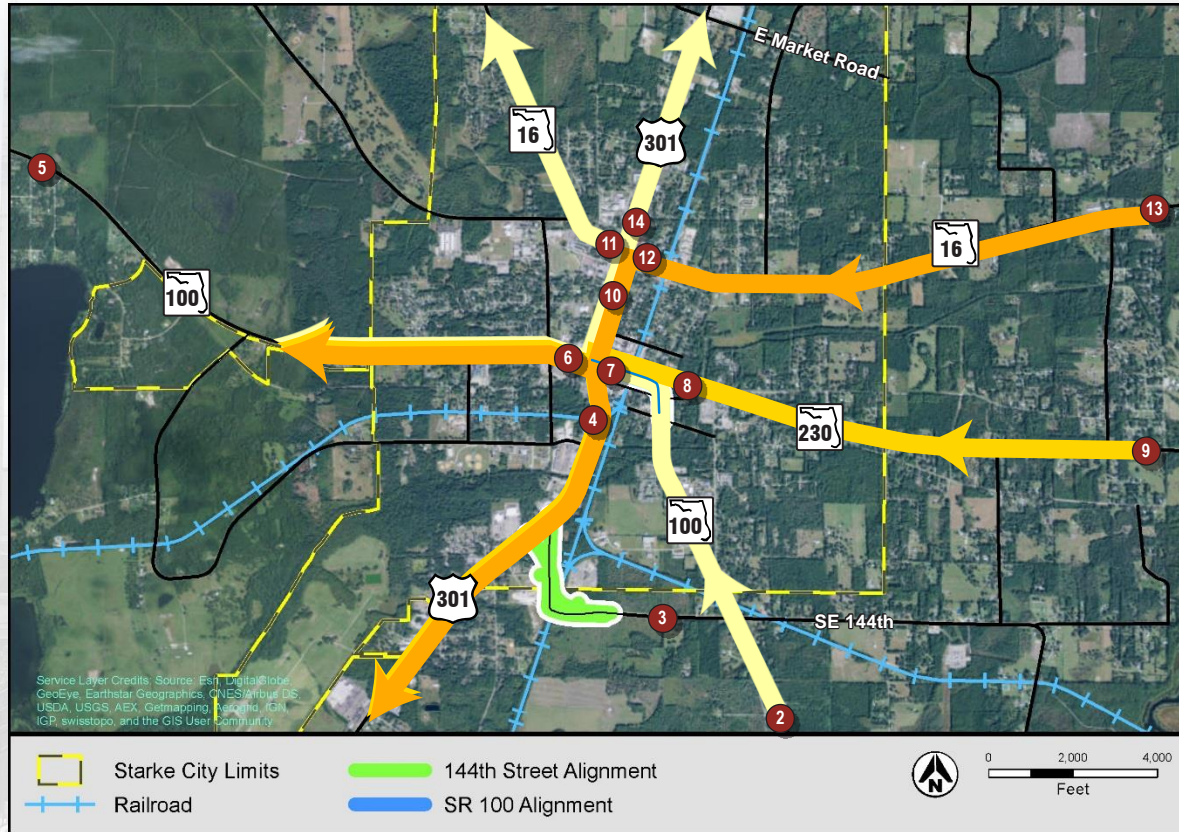
2015 EXISTING TRAFFIC VOLUMES

- US 301 – 27,000 AADT
- SR 16 – 7,600 AADT
- SR 230 – 5,800 AADT
- SR 100 – 8,900 AADT
- SE 144th – 1,400 AADT

AADT = Average Annual Daily Traffic



ORIGIN AND DESTINATION SURVEY

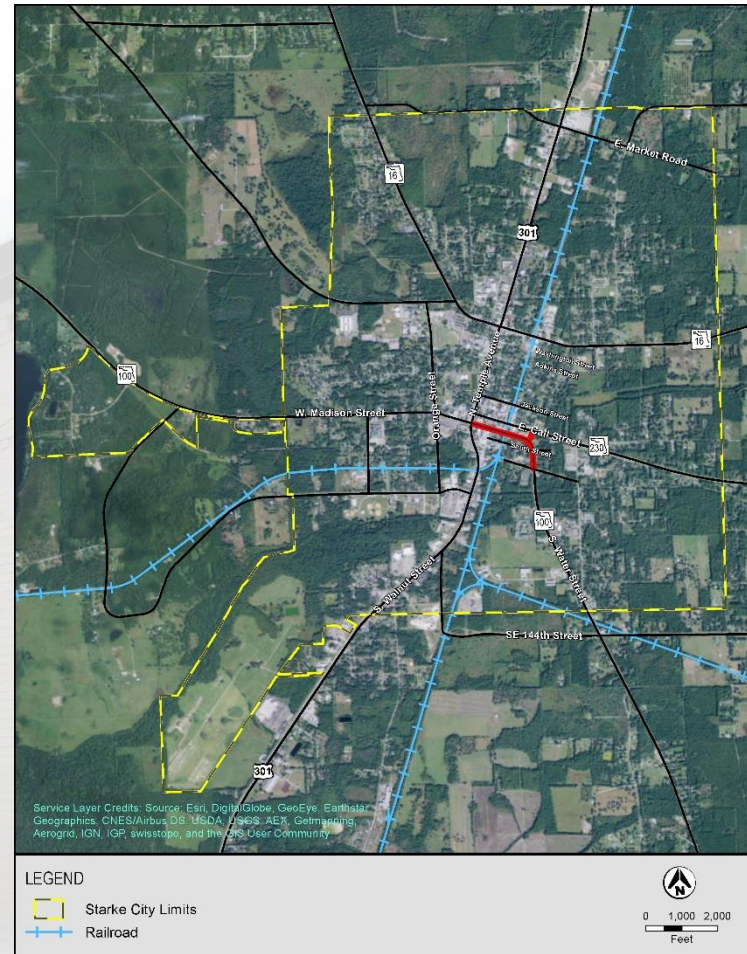
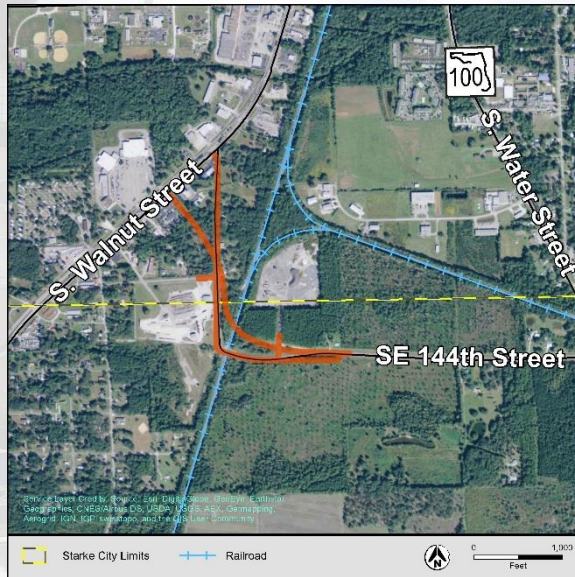


STARKE RAILROAD OVERPASS STUDY

PREVIOUS PUBLIC MEETINGS

Alternatives

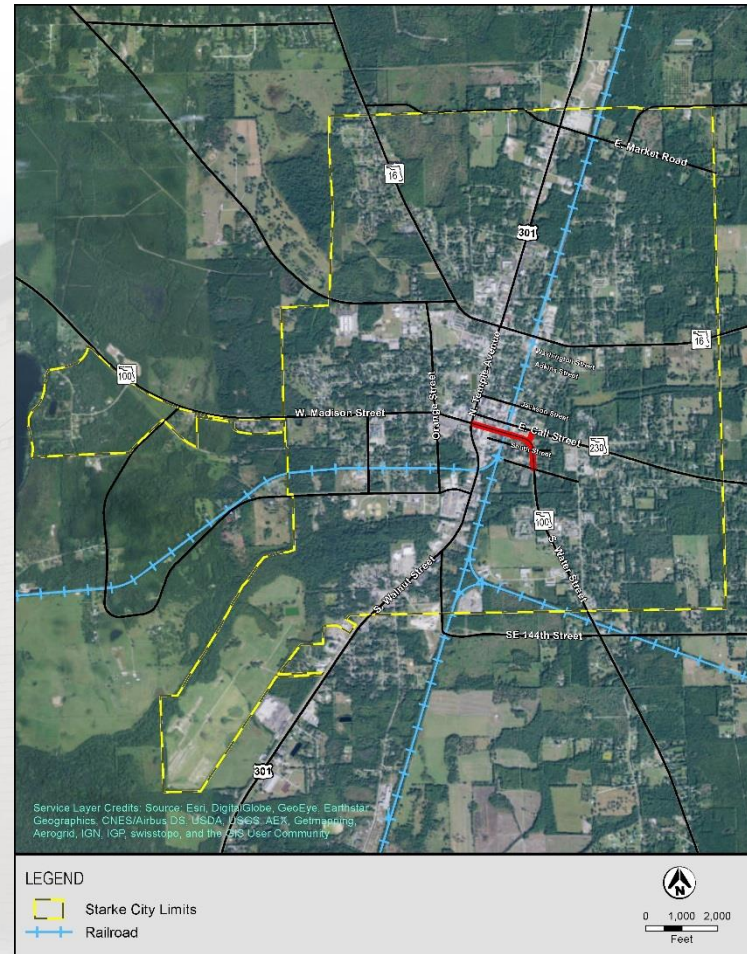
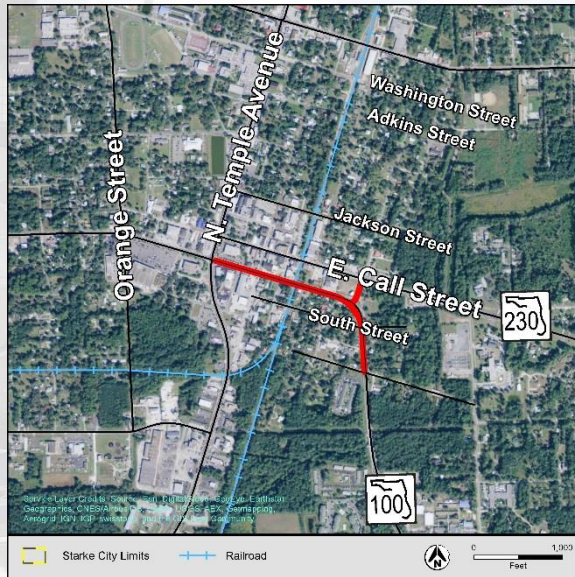
- SE 144th
- SR 100



PREVIOUS PUBLIC MEETINGS

Alternatives

- SE 144th
- SR 100



UPDATES SINCE PUBLIC MEETING HELD IN AUGUST 2015

Two alternatives:

- SE 144th
 - Updated cost estimate and revised concept
 - Data collection
- SR 100
 - Focused on connectivity to local street network
 - Continued to local stakeholder coordination
 - Data collection

144th CONCEPT



144th CONCEPT

Pros

- Undeveloped area will facilitate construction
- Minimizes right-of-way costs and impacts to businesses and residences
- Provides an overpass where future commercial development may occur south of town

Cons

- Additional travel time from the central part of town for emergency services
- Located on a local road may prohibit FDOT from providing funding for maintenance for bridge elements
- Not centrally located
- Serves less traffic than SR 100
- May divert vehicles from downtown
- Higher overall cost due to bridge length
- Would require modifications to the improvements at the SE 144th and US 301 intersection that were just constructed



SR 100 CONCEPT



SR 100 CONCEPT

Pros

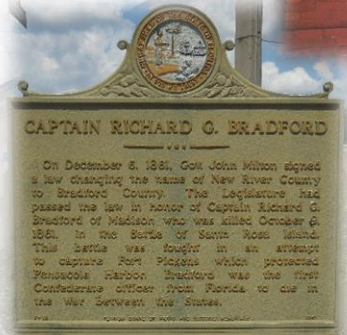
- Centrally located
- Higher traffic volumes than all alternatives considered
- Serves regional traffic and local traffic
- Provides the most direct route to the hospital, a key destination for emergency response vehicles
- Closest route to the Fire Station
- Located on a state road allows FDOT to provide funding for inspection and maintenance for bridge elements
- Provides a complete street approach by improving access, recreational areas and safety for non-motorist

Cons

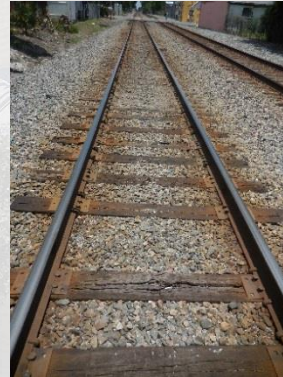
- Impacts to business and residential properties including relocations
- Walnut Street will not connect through the SR 100 intersection
- Disruption of local traffic during construction
- Change in local traffic patterns



STARKE HISTORY & DESIGN INSPIRATION



RAILROAD IMAGERY



CITY CHARACTER & HISTORY

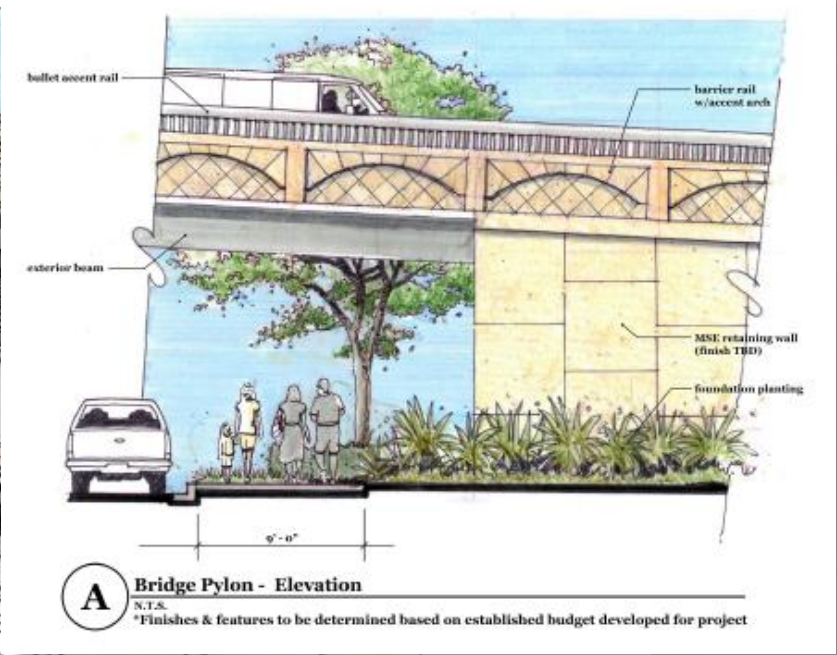
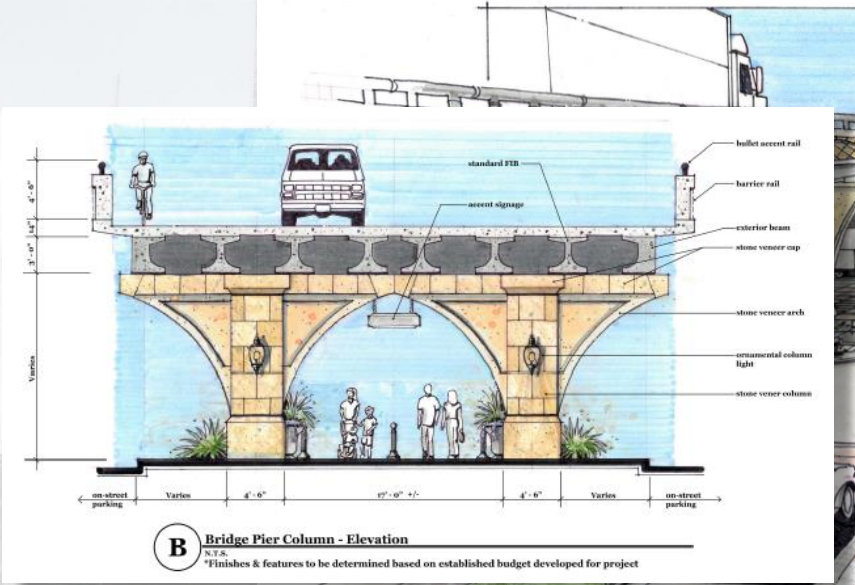
Architectural Details



SR 100 CONCEPT – AESTHETICS



SR 100 CONCEPT – AESTHETICS



CIVIC CELEBRATIONS DOWNTOWN STARKE

BRADFORD COUNTY

18th Annual Festival

Historic Downtown Starke, FL

APRIL 9 & 10, 2016

Food, Entertainment & Fun

Saturday: 9am - 7pm Sunday: 9am - 5pm



10th Annual Festival
Located in Downtown
Starke, Florida
October 9 & 10, 2015
Welcome Bikers!

The poster features a black background with silver chains on the sides. It includes a logo for 'STARKE Bikefest' with wings, a circular seal for 'BIKERS FESTIVAL', and the text '10th Annual Festival', 'Located in Downtown Starke, Florida', 'October 9 & 10, 2015', and 'Welcome Bikers!'.

PROJECT COSTS (IN MILLIONS)

	SE 144 th	SR 100
Engineering	\$8.5	\$4.8
Right-of-Way	\$1.6	\$10.3
Construction	\$28.2	\$17.0
TOTAL	\$38.3	\$32.1

STARKE RAILROAD OVERPASS PROJECT SCHEDULE

PD&E Study Ongoing

Design Fiscal Year 2016

Right-of-Way Fiscal Year 2018

Construction Fiscal Year 2020

WHAT'S NEXT FOR THE PROJECT

- Consider all input from tonight's meeting
- Consider input from all stakeholders including City and County officials.
- Select Preferred Alternative
- Hold Public Hearing in Summer 2016
- Start design process

QUESTIONS?

Stephen Browning, PE, Project Manager
Florida Department of Transportation
1109 South Marion Avenue, MS 2007
Lake City, FL 32025

(386) 961-7455

stephen.browning@dot.state.fl.us