



Florida Department of Transportation

RON DESANTIS
GOVERNOR

2198 Edison Avenue
Jacksonville, Florida 32204-2730

KEVIN J. THIBAUT, P.E.
SECRETARY

For Immediate Release

March 29, 2021

Contact: Samantha Rambeau

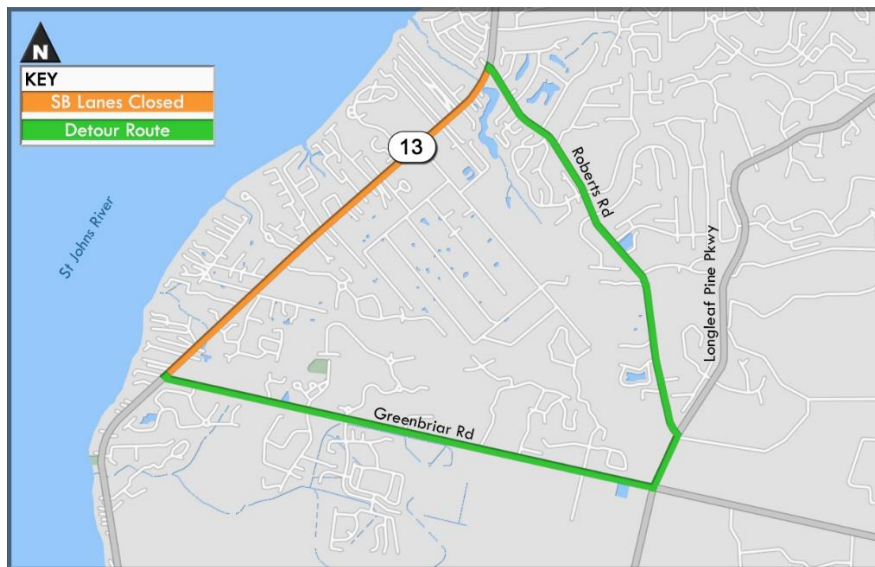
(386) 269-3602

Samantha.Rambeau@dot.state.fl.us

State Road 13 Southbound to Be Detoured Overnight March 29-31

JACKSONVILLE, Fla. – The Florida Department of Transportation (FDOT) will detour the southbound lanes of State Road 13 from Roberts Road to Greenbriar Road Monday, March 29 through Wednesday, March 31 from 10 p.m. to 5 a.m. for median work.

As shown in the map below, drivers will be detoured onto Roberts Road, Longleaf Pine Parkway and Greenbriar Road to rejoin southbound State Road 13. A traffic control officer will be available to assist drivers with left turn movements from westbound Greenbriar Road to southbound State Road 13.



This work is part of FDOT's resurfacing project on State Road 13 from Mill Creek to the Duval County line that started in February 2021.

Stay informed about lane closures and roadwork in your area by following FDOT District 2 at [@MyFDOT_NEFL](https://twitter.com/MyFDOT_NEFL) on Twitter or at [MyFDOTNEFL](https://www.facebook.com/MyFDOTNEFL) on Facebook.

###

Improve Safety, Enhance Mobility, Inspire Innovation
NFLRoads.com | [@MyFDOT_NEFL](https://twitter.com/MyFDOT_NEFL) | [Facebook.com/MyFDOTNEFL](https://www.facebook.com/MyFDOTNEFL)

The Florida Department of Transportation's mission is to provide a safe transportation system that ensures the mobility of people and goods, enhances economic prosperity, and preserves the quality of the state's environment and communities. The department is committed to building a transportation system that not only fits the current needs of Florida's residents and visitors, but also enhances mobility throughout the state to accommodate its consistent and rapid growth. The unique nature of the Sunshine State and its year-round warm climate provides numerous opportunities to achieve the department's mission through multiple transportation modes including highways/streets, air, rail, sea, spaceports, transit, and the ever-expanding deployment of bicycle & pedestrian facilities.